




UDC 622.253.3

Theoretical analysis of frozen wall dynamics during transition to ice holding stage

Mikhail A. SEMIN , Aleksandr V. BOGOMYAGKOV, Lev Yu. LEVIN

Mining Institute of the Ural Branch of the Russian Academy of Sciences, Perm, Russia

Series of calculations for the artificial freezing of the rock mass during construction of mineshafts for the conditions of a potash mine in development was carried out. Numerical solution was obtained through the finite element method using ANSYS software package. Numerical dependencies of frozen wall thickness on time in the ice growing stage and ice holding stage are obtained for two layers of the rock mass with different thermophysical properties. External and internal ice wall boundaries were calculated in two ways: by the actual freezing temperature of pore water and by the temperature of -8°C , at which laboratory measurements of frozen rocks' strength were carried out. Normal operation mode of the freezing station, as well as the emergency mode, associated with the failure of one of the freezing columns, are considered. Dependence of a decrease in frozen wall thickness in the ice holding stage on the duration of the ice growing stage was studied. It was determined that in emergency operation mode of the freezing system, frozen wall thickness by the -8°C isotherm can decrease by more than 1.5 m. In this case frozen wall thickness by the isotherm of actual freezing of water almost always maintains positive dynamics. It is shown that when analyzing frozen wall thickness using the isotherm of actual freezing of pore water, it is not possible to assess the danger of emergency situations associated with the failure of freezing columns.

Key words: frozen wall; Stefan problem; mathematical modeling; artificial rock freezing; technological parameters; freezing system; freezing column

Acknowledgement. This work was supported by the Russian Science Foundation as part of the research project N 19-77-30008.

How to cite this article: Semin M.A., Bogomyagkov A.V., Levin L.Yu. Theoretical analysis of frozen wall dynamics during transition to ice holding stage. Journal of Mining Institute. 2020. Vol. 243, p. 319-328. DOI: 10.31897/PMI.2020.3.319

Introduction. One of the most common methods for constructing mineshafts in difficult hydrogeological and geological conditions is the artificial freezing of rocks [15, 19]. A frozen wall (FW) formed as a result of artificial freezing is a temporary waterproof curtain that prevents the penetration of groundwater into constructed mine [10, 11]. Efficiency of FW ultimately depends on its thickness and continuity along the perimeter and depth of the contour for freezing wells (Fig.1).

Actual FW thickness is predicted using both theoretical [14, 15, 17] and experimental methods [13, 18]. Integrated methods are also being applied at present to study the state of FW, based on the combined use of theoretical and experimental methods with their mutual refinement [5, 16]. Important issue in determining the FW thickness during freezing of a rock mass is the choice of isotherms, corresponding to the positions of the internal and external FW boundaries. In practice, two methods are used to select such boundary isotherms for determining FW thickness: by actual freezing temperature of pore water; and by temperature at which laboratory measurements of the frozen rocks' strength and creep parameters were carried out.

An important circumstance here is that in projects for rocks' freezing, the calculation of the required FW thickness by the factor of total rock and hydrostatic

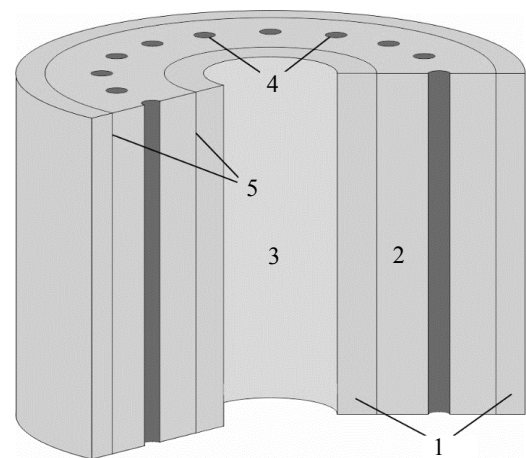


Fig.1. FW schematic view

1 – unfrozen zone; 2 – frozen zone; 3 – mine shaft;
4 – freezing columns; 5 – internal and external fronts
of the phase transition (FW boundaries)



pressure is made with the assumption of a uniform temperature distribution in the entire FW volume [1, 12]. This temperature is usually lower than the actual freezing temperature of pore water in the rock mass.

The first method for selecting boundary isotherms assumes that the average volume temperature for the FW is approximately equal to the temperature, for which the rock strength and creep parameters was calculated. Moreover, near FW boundaries, temperature of frozen rocks is higher than the temperature in calculations of rocks' strength and creep parameters. The second method considers the temperature at FW boundaries to be equal to the temperature in calculations of rocks' strength and creep parameters. In this case, average volume temperature for the FW is lower than the temperature, at which the rocks' strength and creep parameters was calculated. In this regard, the first method can lead to an underestimation of the actual FW strength and creep parameters characteristics, and the second method – to overstatement. Deeper analysis of the advantages and disadvantages of the two indicated methods for selecting the boundary isotherms of the FW should be carried out by means of conjugate thermophysical and geomechanical calculations, which is beyond the scope of the thermophysical study described in this paper.

Based on the experience described in the literature on artificial freezing of rocks during mineshafts construction [2, 10, 11], it can be accepted that both methods of selecting boundary isotherms of the FW are appropriate in the ice growing stage of the rock mass when the temperature of the freezing brine (coolant) is minimal, and its flow rate is maximum. However, during transition to ice holding stage, which corresponds to higher brine temperatures and/or lower brine flow rates, relevance of these two methods is not obvious. This is primarily due to the fact that, upon transition to ice holding stage, temperature field near freezing columns can vary greatly [9]. In turn, this can lead to a local decrease in FW thickness to values lower than those required by the condition of strength and creep.

Emergency situations during the operation of artificial freezing systems raise even more questions about relevance of the mentioned above methods. Emergency mode can be associated, for example, with the failure of one or more freezing columns [4, 8]. In this case, temperature field of the frozen rock mass in the vicinity of the damaged freezing columns can change strongly.

In the Russian and foreign literature on mining thermophysics, the issue of reducing FW thickness, calculated by different isotherms during the transition to ice holding stage in case of emergency situations during the operation of the artificial freezing system has not been studied. Moreover, this issue is relevant for performing the correct thermophysical calculations for freezing of the rock mass and FW formation.

Aim of this study is a theoretical analysis of the dynamics for FW thickness, calculated by various isotherms during the transition from to ice growing stage to ice holding stages. Particular attention is paid to the analysis of FW thickness in the event of an emergency situation associated with the failure of the freezing column.

Mathematical formulation of the problem. Horizontal layer of the rock mass was considered in the work. To carry out a theoretical analysis of heat transfer in a rock mass layer during its artificial freezing, a two-dimensional unsteady heat conduction case with a moving phase transition boundary was solved. In the model of the rock mass, following physical processes were taken into account that affect the heat distribution in it: “water-ice” phase transition, conductive heat transfer (heat conduction) in the rock mass, heat transfer between the rock mass and the circulating coolant in the columns.

When stating a mathematical problem, following assumptions are made:

- 1) rock mass has isotropic and homogeneous thermophysical properties in frozen and unfrozen zones;
- 2) vertical heat transfer is negligible compared to horizontal one;
- 3) temperature of the brine in the freezing columns is constant;
- 4) freezing columns are equidistant and oriented vertically; deviations of column positions from a perfectly vertical project direction are not considered.

The second assumption is applicable only if the considered rock mass layer has a sufficiently large thickness (more than 10 m), and the simulation time interval is not very large (less than 200 days).

Taking into account the third and fourth assumptions, rotational symmetry appears in the case. Therefore, it suffices to consider the sector of the rock mass, limited by the two main FW planes [11]. Figure 2 shows a simplified geometric model of the frozen rock mass layer, which was used for numerical calculations.

In the geometric model (Fig.2), boundary zone I represents the internal boundary of the calculated area. This zone was introduced to exclude an acute angle from the model and ensure the stability of the numerical solution. Zone I should be offset to the axis of rotational symmetry as much as possible.

Mathematical formulation of the heat conduction problem with a moving boundary of the phase transition (or the Stefan problem) in the enthalpy form is written as follows:

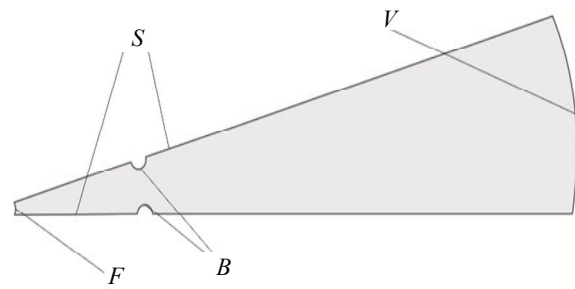


Fig.2. Geometric model of the frozen rock mass layer: *S* – symmetry zones; *B* – walls of the freezing columns; *V* – external boundary of the calculated area, corresponding to the undisturbed rock mass; *F* – internal boundary of the calculated area (heat insulation)

$$\frac{\partial H(T)}{\partial t} = \left[\frac{\partial}{\partial x} \left(\lambda \frac{\partial T}{\partial x} \right) + \frac{\partial}{\partial y} \left(\lambda \frac{\partial T}{\partial y} \right) \right]; \quad (1)$$

$$\lambda = \lambda_{lq} (1 - \varphi_{ice}) + \lambda_{sd} \varphi_{ice}, \quad (2)$$

$$H(T) = \begin{cases} \rho_{lq} c_{lq} (T - T_{lq}) + \rho_w n L, & T_{lq} \leq T \\ \rho_w n L (1 - \varphi_{ice}), & T_{sd} \leq T < T_{lq}; \\ \rho_{sd} c_{sd} (T - T_{sd}), & T < T_{sd} \end{cases} \quad (3)$$

$$\left[\lambda \frac{\partial T}{\partial n_\lambda} - \alpha (T_{fb}(t) - T) \right]_{\Omega_{fb}} = 0; \quad (4)$$

$$T|_{\Omega_{out}} = T_0; \quad (5)$$

$$T|_{t=0} = T_0, \quad (6)$$

where H – specific enthalpy of water-saturated rock mass, J/m^3 ; x, y – physical coordinates, m; t – physical time, s; $\lambda_{lq}, \lambda_{sd}$ – thermoconductivity of the mass in the unfrozen and frozen zones, respectively, $W/(m \cdot ^\circ C)$; c_{lq}, c_{sd} – specific heat capacity of the mass in the unfrozen and frozen zones, respectively, $J/(kg \cdot ^\circ C)$; ρ_{lq}, ρ_{sd} – density of the mass in the unfrozen and frozen zones, respectively, kg/m^3 ; T_{lq} – onset temperature of pore water crystallization (liquidus temperature), $^\circ C$; T_{sd} – melting temperature of pore ice (solidus temperature), $^\circ C$; φ_{ice} – volume fraction of ice in the pores of the rock mass, m^3/m^3 ; L – specific heat of water crystallization, J/kg ; n – porosity of the mass; ρ_w – density of pore water, kg/m^3 ; $T_{fb}(t)$ – temperature of the walls in freezing well, $^\circ C$; T_0 – temperature of undisturbed rock mass at a distance from the freezing circuit, $^\circ C$; α – heat transfer co-

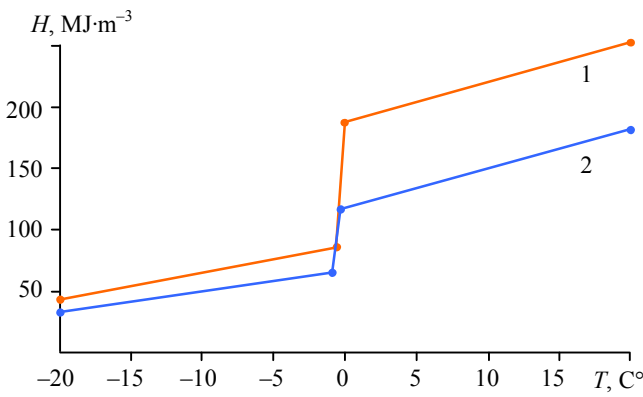


Fig.3. Piece-linear function of specific enthalpy in watered rock mass for two layers of rocks
1 – chalk; 2 – clay

efficient at the boundary with freezing wells, $W/(m^2 \cdot ^\circ C)$; $\Omega_{fb} = \cup \Omega_{fbi}$ – boundaries with all freezing wells $i = 1, \dots, N$; Ω_{out} – outer boundary of the simulation area, n_λ – coordinate along the normal to the boundary Ω_{fb} , m.

Phase transformations of pore water in the model are taken into account by setting the specific enthalpy function $H(T)$ (3). Surge of this function in the vicinity of the phase transition temperatures is determined by the latent heat of the phase transition in a unit volume of the water-saturated rock mass. Typical piece-linear form of the specific enthalpy function $H(T)$ used in this work for numerical calculations is shown in Fig.3.

Calculation of coefficient for the heat transfer between the rock mass and the freezing brine in (4) is determined by the formula for the transition mode of the brine flow [7]:

$$\alpha = 0,11(\text{Re} - 2120)^{0,62} \frac{\lambda_c}{d} \quad \text{at} \quad 2200 \leq \text{Re} < 10^4; \quad (7)$$

$$\text{Re} = \frac{\rho_c V_c \Delta}{\eta_c}, \quad (8)$$

where d – internal diameter of the pipeline, m; Δ – characteristic cross-section of the flow region of the brine, which exchanges heat with the rock mass, m; λ_c – brine thermal conductivity, $W/(m \cdot ^\circ C)$; ρ_c – brine density, kg/m^3 ; V_c – brine velocity, averaged by cross section, m/s; η_c – dynamic viscosity of the brine, Pa·s.

Structurally, freezing columns are made of two pipes – an external freezing and an internal supplying. Freezing brine first moves down the internal flow region, and then up the external flow region between the outer and inner tubes. Ratio of the cross-section areas for the external and internal flow regions to simplify the calculation can be taken equal to 1. In this case, characteristic cross-section of the flow region of the brine is $\Delta = d/\sqrt{2}$.

Volume fraction of ice in the pores of the rock mass is determined as follows:

$$\varphi_{ice}(T) = \begin{cases} 1, & T < T_{sd} \\ (T_{lq} - T)/(T_{lq} - T_{sd}), & T_{sd} \leq T < T_{lq} \\ 0, & T_{lq} \leq T \end{cases} \quad (9)$$

Emergency operation mode of the freezing system is modeled by turning off (or failure) one of the freezing columns at the moment of transition ice holding stage. Shutdown is modeled by setting $\alpha = 0$ at the moment of transition ice holding stage.

Such a choice for the moment of system's emergency operation occurrence is due to the following considerations. Firstly, occurrence of malfunctions in the freezing system seems to be most likely in system's transient modes of operation. Secondly, in this case it will be possible to carry out the most informative and understandable assessment of the decrease in FW thickness, since the comparison will be made with the design value of FW thickness, achieved in the ice growing stage in the normal mode of operation of all freezing columns.

Numerical simulation. Numerical solution for the case of FW formation is carried out using the finite element method in the Transient Thermal module of the ANSYS software package.



As input data for numerical calculation, initial data for the project of the rock mass freezing in the shafts of a potash mine under construction in the Republic of Belarus were used.

Two rock layers were studied: the least heat conducting (chalk layer) and the most heat conducting (clay layer) in the considered range of rock freezing (0-275 m). Main thermophysical properties of the two considered rock layers are presented in Table 1:

Table 1

Thermophysical properties of the considered rock layers

Layer	λ_{sd} , W/(m·°C)	λ_{lq} , W/(m·°C)	C_{sd} , J/(kg·°C)	C_{lq} , J/(kg·°C)	ρ_{sd} , kg/m ³	ρ_{lq} , kg/m ³	n
Chalk	2.46	1.67	1164	1720	1870	1870	0.305
Clay	4.30	2.64	900	1712	1840	1840	0.158

It was assumed that freezing brine with a temperature of $-35\text{ }^{\circ}\text{C}$ is supplied to the columns during ice growing stage. During transition to ice holding stage, temperature of the brine for 5 days evenly rises to $-20\text{ }^{\circ}\text{C}$, brine flow rate is constant and taken equal to $240\text{ m}^3/\text{h}$.

FW thickness was determined in two ways – by the actual temperature T_{sd} of complete freezing of water in the pore space of the mass and by the isotherm $T_d = -8\text{ }^{\circ}\text{C}$, at which the strength and creep parameters of the rock was determined. Actual freezing temperature of pore water for the clay layer is $T_{sd} = -0.9\text{ }^{\circ}\text{C}$, while for the chalk layer $T_{sd} = -0.58\text{ }^{\circ}\text{C}$.

Radius of the external boundary for the calculated area was taken to be 40 m, whereas the radius of the internal boundary was 0.25 m. Radius of the freezing column contour was 8 m. Outer radius of the freezing column was 0.073 m and inner radius was 0.068 m. Distance between the centers of neighboring freezing columns was 1.2 m.

Transition to ice holding stage varies in the range of 12.5-100 days with an increment of 12.5 days.

Figure 4 shows the dependencies of FW thickness E on time obtained as a result of numerical simulation. Numerical dependencies are presented for two layers (chalk and clay), two operating modes (normal and emergency), two methods for determining FW thickness (by isotherms T_{sd} and T_d). Fig.4, *a* and *c* shows the transition to emergency mode to occur after 50 days, whereas Fig.4, *b* and *d* – after 100 days since the start of freezing.

Chalk freezing is much slower compared to clay (Fig.4). This is due to the lower thermal conductivity of the chalk and the high water content in it. Differences between the graphs of FW thickness $E(t)$ in the ice growing and ice holding stages, as well as in the normal and emergency operation modes of the freezing station, are most significant for the case of calculating FW thickness by the isotherm $T_d = -8\text{ }^{\circ}\text{C}$. This is due to the fact that this isotherm is closer to the contour of the freezing columns; therefore, a change in the operating mode of the columns has a stronger effect on it than on the more remote T_{sd} isotherm. Also, when the operating mode of the columns changes, temperature change near the boundary of the actual phase transition of pore water (i.e. near T_{sd} isotherm) occurs more slowly due to the additional inertia of the temperature field in this zone, associated with the duration of the phase transition process (which is determined by the latent heat of the phase transition and water content in the rock).

Inertia of the phase transition process can be easily demonstrated by writing the equation for motion of the phase transition front, which for one-dimensional radial Stefan problem [3, 6] has the form:

$$\rho_w n L \frac{dR(t)}{dt} = q_{sd} - q_{lq}, \quad (10)$$

where $R(t)$ – radial coordinate of the phase transition front, m; q_{lq} – heat flow from the unfrozen zone, W/m^2 ; q_{sd} – heat flow to frozen zone, W/m^2 .

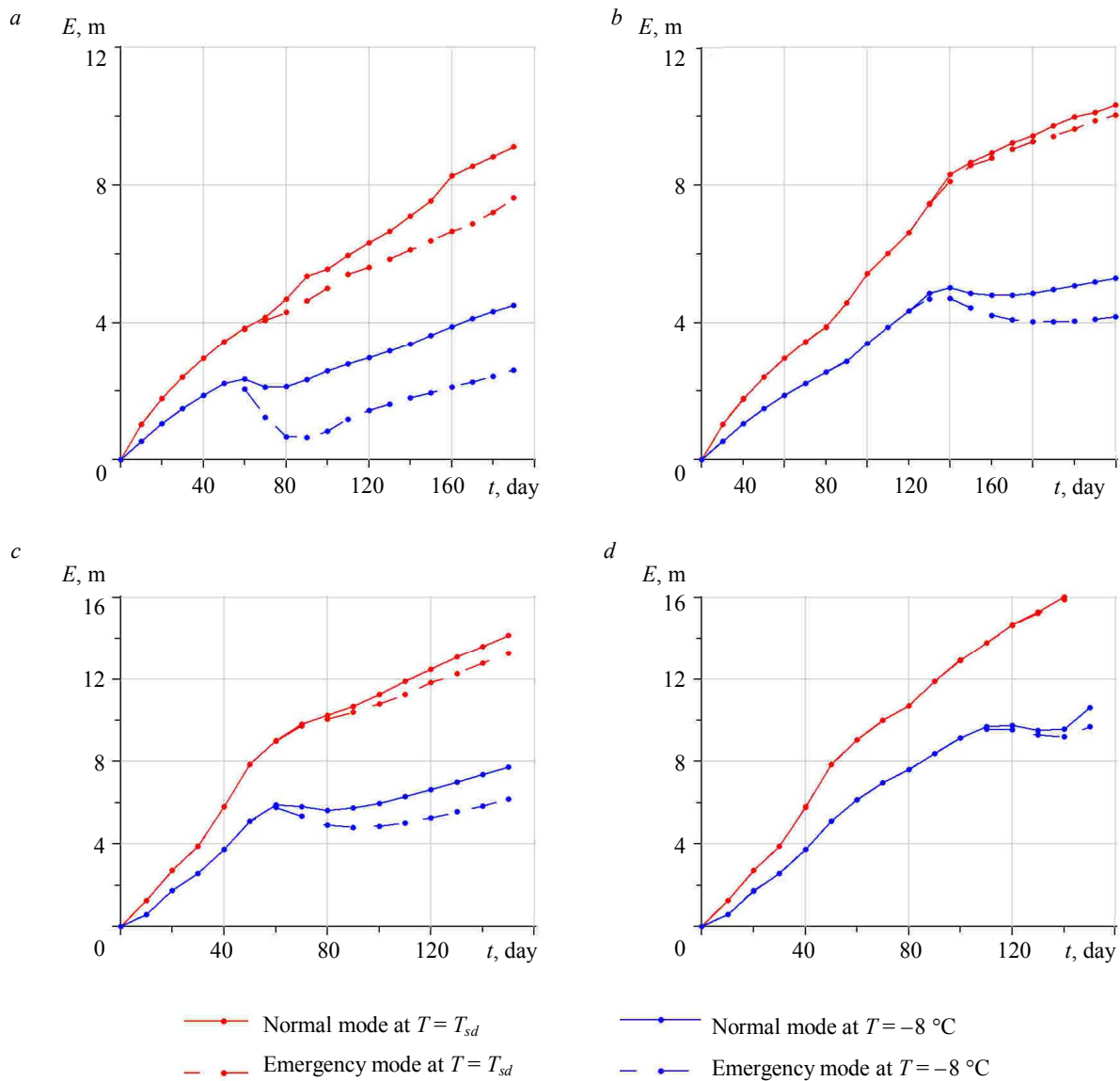


Fig.4. FW thickness by isotherms T_{sd} and T_d depending on time for normal and emergency operation modes of the freezing system:
a – chalk, 50 days ice growing stage; *b* – chalk, 100 days ice growing stage;
c – clay, 50 days ice growing stage; *d* – clay, 100 days ice growing stage

Fig.4 shows that for all layers and all modes of freezing system operation, during transition to ice holding stage, a decrease in FW thickness to values lower than required by the project is observed. With an earlier transition to ice holding stage (50 days), a decrease in FW thickness is manifested more significantly than in the case of a later transition (100 days). This is explained by the fact that after 100 days of ice growing stage the rock mass manages to cool to lower temperatures and to a greater distance than for 50 days, as a result of which the heat influx, coming from the unfrozen zone to the phase transition front, decreases. In emergency mode of operation of the freezing system, decrease in FW thickness by the isotherm $T_{sd} = -8\text{ }^{\circ}\text{C}$ manifests itself more significantly.

FW thickness reduction analysis. An informative parameter that allows an analysis of the decrease in FW thickness in the ice holding stage and emergency operation of the system is the maximum decrease in FW thickness:

$$\Delta E = \max(0; E_A - E_P), \quad (11)$$



where E_A – design FW thickness achieved by the end of the ice growing stage, m; E_P – minimal FW thickness in the ice holding stage, m. Table 2 presents the values of FW thicknesses and their maximum decrease for the two layers under consideration by the isotherm $-8\text{ }^\circ\text{C}$.

Table 2

FW thicknesses ($-8\text{ }^\circ\text{C}$) in ice growing and ice holding stages and their maximum values

Time	Chalk			Clay		
	E_A , m	E_P , m	ΔE , m	E_A , m	E_P , m	ΔE , m
50 days	2.21	0.63	1.58	5.11	4.81	0.30
100 days	4.35	4.02	0.33	9.15	9.21	0.06

Figure 5 shows the numerical dependence of ΔE by the $-8\text{ }^\circ\text{C}$ isotherm on time of ice growing stage of the rock mass for emergency operation mode of the freezing system. Schedule for the normal operation mode of the freezing system is not given, since ΔE is almost everywhere equal to zero: value is different ΔE from zero only in a small time interval from 35 to 50 days and does not exceed 0.15 m.

Figure shows that in the emergency operation mode of the system, ΔE is a complex non-monotonic function of ice growing stage time. Moreover, for the two rock layers considered in this work, this function has a significantly different form.

Growth curve ΔE in the interval from zero to the first local maximum corresponds to a situation in which failure of the freezing column leads to a decrease in FW thickness by the $-8\text{ }^\circ\text{C}$ isotherm to zero. With a further increase in time of ice growing stage, function $\Delta E(t)$ for chalk decreases monotonously, tending to a zero value. Decrease of $\Delta E(t)$ in this case is due to the fact that the longer the time of ice growing stage, the stronger the mass has time to freeze in the unfrozen zone and the smaller the decrease in FW thickness in ice holding stage will be.

The $\Delta E(t)$ curve for clay decreases only until time instant of 37.5 days, after which the decrease is replaced by an increase. This behavior of $\Delta E(t)$ curve for clay is associated with different dynamics of the internal and external fronts of the phase transition (Fig.6). In the interval of 12.5-37.5 days, the decrease in $\Delta E(t)$ for clay is due to the fact that the internal FW front moves deeper into the mass faster than the displacement of the external FW front to the contour of freezing wells. Further, displacement rate of the external FW front begins to exceed the advancement speed of the internal FW front, as a result of which, in time interval of 37.5-62.5 days the function $\Delta E(t)$ increases.

After 62.5 days the displacement of the external FW front again becomes smaller than the advancement of the internal FW front, therefore $\Delta E(t)$ decreases and tends to zero.

Analysis of Fig.5 allows to conclude that the decrease in FW thickness by the $-8\text{ }^\circ\text{C}$ isotherm in ice holding stage in emergency operation mode connected with the failure of one of the freezing columns is significantly higher than zero, i.e. over some period of time, actual FW thicknesses will be lower than the values required by the project, which is unacceptable. When analyzing FW thickness by isotherms of actual freezing of rocks, it is impossible to “catch” such a decrease in

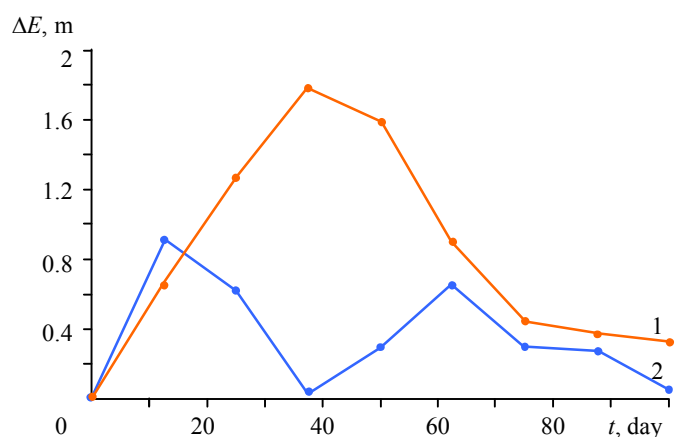


Fig.5. Maximum reduction in FW thickness ΔE during transition ice holding stage in emergency mode (turning off one freezing column)
1 – chalk; 2 – clay

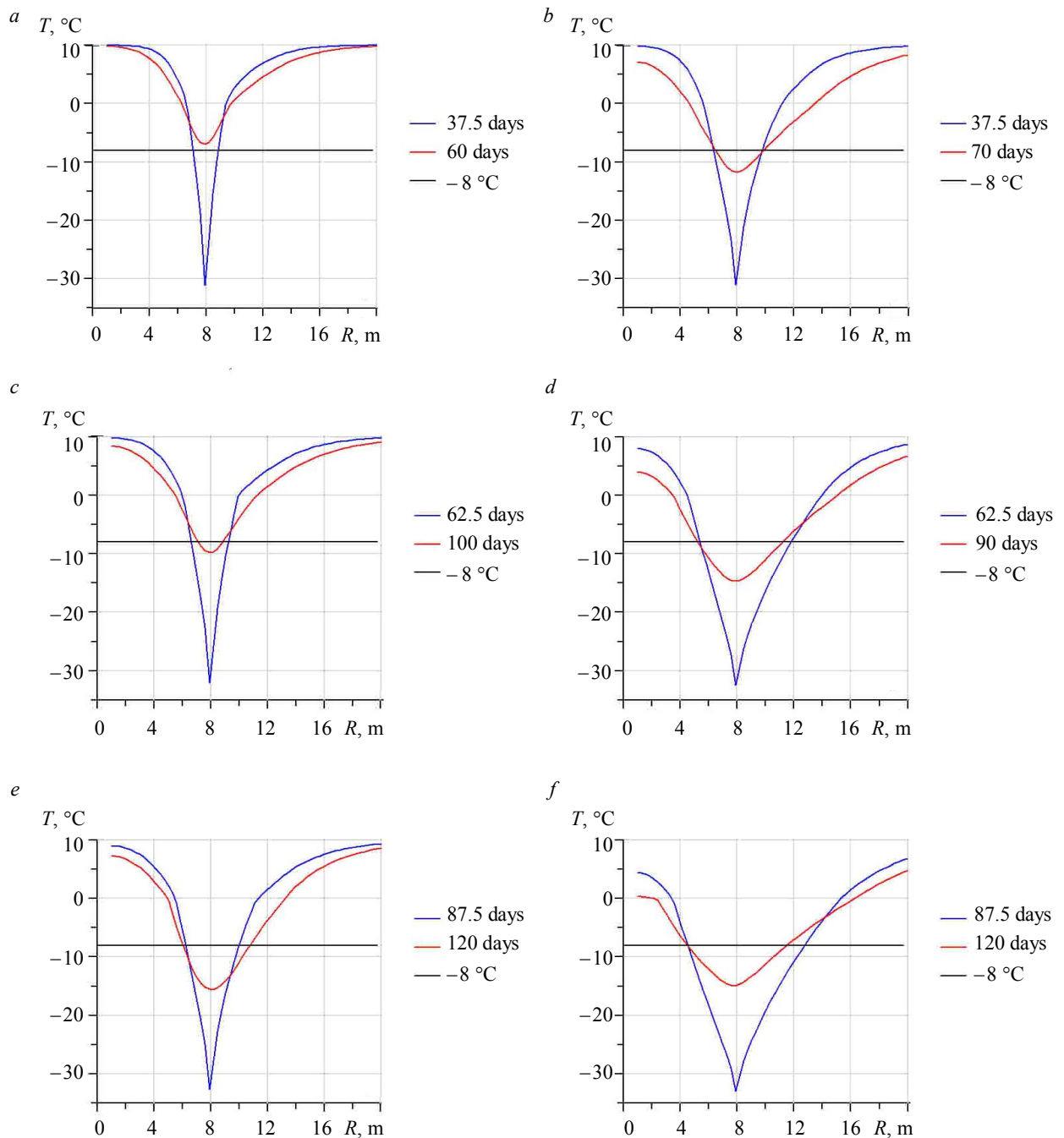


Fig.6. Temperature distribution along the main FW plane during transition to ice holding stage (blue curve) and when the minimum FW thickness is reached (red curve):
a – chalk; b – clay, 37.5 days of ice growing stage; c – chalk; d – clay, 62.5 days of ice growing stage;
e – chalk; f – clay, 87.5 days of ice growing stage

FW thickness in ice holding stage. Moreover, in practice, there may be a situation when FW thickness in the isotherm T_{sd} will continue to increase, and FW thickness by the isotherm -8 °C will decrease to zero.

In this case, it is advisable to develop methods and measures aimed at eliminating the situation when the actual FW thickness will be lower than the design one. One of such measures may be a temporary change in the parameters of the freezing brine in ice holding stage (decrease in temperature, increase in flow rate). In addition, a possible method to increase the reliability of the artificial freezing system in the event of emergency shutdown of freezing columns may be to regulate the distance between adjacent freezing columns at the stage of developing a project for freezing a rock



mass. As noted in [8], FW thickness at all stages of freezing strongly depends on the distance between the freezing columns.

Conclusion. Paper provides a theoretical analysis of FW dynamics in ice holding stage in the normal and emergency operations modes of the freezing system and considers mining and geological conditions of the potash mine under construction in the Republic of Belarus. The main results of the work:

1. During transition to the ice holding stage, dynamics of FW thickness significantly depends on how FW boundaries are determined: by isotherm of actual freezing of pore water or by isotherm (assumed to be -8°C), corresponding to laboratory measurements of the frozen rocks' strength and creep parameters. If FW thickness calculated by the isotherm of the actual freezing of water retains its positive dynamics, then FW thickness calculated by the isotherm of -8°C can significantly decrease.

2. Significant decrease in FW thickness in the ice holding stage freezing occurs during emergency operation mode of the system associated with the failure of one of the freezing columns. In this case, for considered mining and geological conditions, FW thickness by the isotherm of -8°C can decrease to values of more than 1.5 m. In this case, FW thickness by the isotherm of actual freezing of water almost always maintains positive dynamics.

3. When analyzing FW thickness by the isotherm of actual freezing of pore water, it is not possible to assess the risk of accidents associated with failure of freezing columns, since this FW thickness maintains positive dynamics. Important circumstance is that when calculating FW thickness by the isotherm of the actual freezing of pore water, it is assumed that the average temperature of the entire frozen mass constituting the FW should be about -8°C . However, this condition may be violated if the freezing columns fail. Therefore, it is more reliable to calculate FW thickness by the temperature at which laboratory measurements of the frozen rocks' strength and creep parameters were carried out.

REFERENCES

1. Vyalov S.S. Rheology of frozen soils. Moscow: Stroiizdat, 2000, p. 463 (in Russian).
2. Dorman Ya.A. Special working techniques at the construction of subways. Moscow: Transport, 1981, p. 302 (in Russian).
3. Karslou G., Eger D. Thermoconductivity of solids. Moscow: Nauka, 1964, p. 488 (in Russian).
4. Levin L.Yu., Kolesov E.V., Semin M.A. Study of ice wall dynamics in conditions of damage to freezing columns during construction of mineshafts. *Gornyi informatsionno-analiticheskii byulleten*. 2016. N 11, p. 257-265 (in Russian).
5. Levin L.Y., Semin M.A., Zaitsev A.V. Adjustment of Thermophysical Rock Mass Properties in Modeling Frozen Wall Formation in Mine Shafts under Construction. *Journal of Mining Science*. 2019. Vol. 55. N 1, p. 157-168. DOI: 10.1134/S1062739119015419
6. Levin L.Y., Semin M.A., Parshakov O.S. Mathematical prediction of frozen wall thickness in shaft sinking. *Journal of Mining Science*. 2017. Vol. 53. N 5, p. 938-944. DOI: 10.1134/S1062739117052970
7. Mikheev M.A. Heat transfer fundamentals. Moscow-Leningrad: Gosenergoizdat, 1956, p. 392 (in Russian).
8. Palankoev I.M. Analysis of the causes for emergencies occurrence during construction of vertical shafts by the method of artificial freezing of soils. *Bezopasnost truda v promyshlennosti*. 2014. N 2, p. 49-53 (in Russian).
9. Pugin A.V. Optimization of ice holding stage during construction of mineshafts under the protection of ice walls. *Gornoe ekho*. 2019. N 1, p. 92-96. DOI: 10.7242/ESNO.2019.1.20 (in Russian).
10. Nasonov I.D., Fedyukin V.A., Shuplik M.N., Resin V.I. Technology of underground structures construction. Special construction methods. Moscow: Nedra, 1992, p. 351 (in Russian).
11. Trupak N.G. Soils freezing in underground construction. Moscow: Nedra, 1974, p. 280 (in Russian).
12. Liu B., Ma Y., Sheng H., Deng H., Han Q., Cao Y. Experimental study on mechanical properties of Cretaceous red sandstone under different freezing temperatures and confining pressures. *Chinese Journal of Rock Mechanics and Engineering*. 2019. Vol. 38. Iss. 3, p. 455-466. DOI: 10.13722/j.cnki.jrme.2018.0780
13. Hentrich N., Franz J. About the application of conventional and advanced freeze circle design methods for the Ust-JaFWa freeze shaft project. Vertical and Decline Shaft Sinking. Good Practices in Technique and Technology. International Mining Forum. Leiden: CRC Press/Balkema, 2015, p. 89-104.
14. Alzoubi M.A., Sasmito A.P., Madiseh A., Hassani F.P. Intermittent Freezing Concept for Energy Saving in Artificial Ground Freezing Systems. *Energy Procedia*. 2017. Vol. 142, p. 3920-3925. DOI: 10.1016/j.egypro.2017.12.297



15. Yao Z., Cai H., Xue W., Wang X., Wang Z. Numerical simulation and measurement analysis of the temperature field of artificial freezing shaft sinking in Cretaceous strata. *AIP Advances*. 2019. Vol. 9. N 2. 025209. DOI:10.1063/1.5085806
16. Pimentel E., Papakonstantinou S., Anagnostou G. Numerical interpretation of temperature distributions from three ground freezing applications in urban tunneling. *Tunnelling and Underground Space Technology*. 2012. Vol. 28, p. 57-69. DOI: 10.1016/j.tust.2011.09.005
17. Rouabhi A., Jahangir E., Tounsi H. Modeling heat and mass transfer during ground freezing taking into account the salinity of the saturating fluid. *International Journal of Heat and Mass Transfer*. 2018. Vol. 120, p. 523-533. DOI: 10.1016/j.ijheatmasstransfer.2017.12.065
18. Sheng T.-B., Wei S.-Y. Measurement and engineering application of temperature field multiple-ring hole frozen wall in extra-thick clay strata. *Chinese Journal of Geotechnical Engineering*. 2012. Vol. 34. N 8, p. 1516-1521.
19. Shcherban P., Razumovich S., Eliseev A. Sinking of vertical mine openings in unstable, water-bearing strata using mobile hydraulic complex. Proceedings of International Conference on Management – Economics – Ethics – Technology (MEET 2017), 21-22 September 2017, Zarbrze, Poland, 2017, p. 97-106.

Authors: **Mikhail A. Semin**, Candidate of Engineering Sciences, Researcher, seminma@outlook.com (Mining Institute of the Ural Branch of the Russian Academy of Sciences, Perm, Russia), **Aleksandr V. Bogomyagkov**, Research Assistant, bavaerolog@gmail.com (Mining Institute of the Ural Branch of the Russian Academy of Sciences, Perm, Russia), **Lev Yu. Levin**, Doctor of Engineering Sciences, Head of Department, aerolog.lev@gmail.com (Mining Institute of the Ural Branch of the Russian Academy of Sciences, Perm, Russia).

The paper was received on 28 October, 2019.

The paper was accepted for publication on 18 November, 2019.