

552.54:551.72

MOLAR TOOTH STRUCTURE –

119991, . , ., 65

E-mail: vgkuz@yandex.ru

28 2004 .

olar-tooth structure (MTS).

MOLAR TOOTH STRUCTURE – IS A SPECIFIC STRUCTURE OF THE RIPHEAN SEDIMENTS

V.G. Kuznetsov

Russian State University of Oil and Gas

The characteristic of the peculiarities of the Upper Precambrian structure is described. This structure is called in the English literature a Molar-tooth structure (MTS) and represents the system of sinuous venues of the calcimicrite in the dark color carbonate enriched with organic material. The mechanism of its formation as a result of the natural fluidfracture is suggested. The forming of these fluids including gas is stipulated by diagenetic decay of organic matter of the cyanobacterial mats.

Key words: *carbonate rocks, Riphean, structure, Cyanobacteria.*

(molar-tooth structure – MTS).

1885 .

(

– , « » . .)

«... .

(. 1, 2).

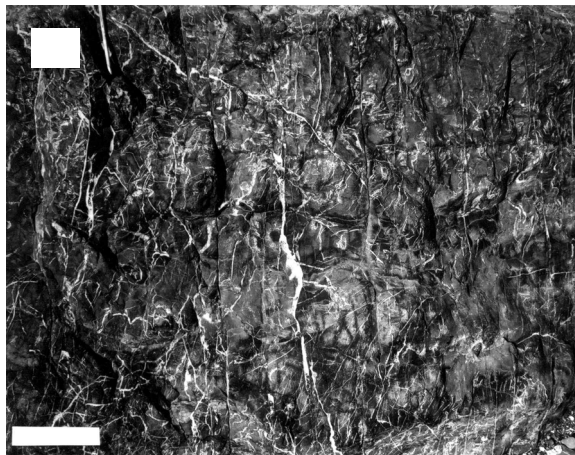
(«...impure limestone, in which the carbonate of lime is intermingled with argillaceous patches in folds resembling the markings in the molar tooth of an elephant» ([Furniss et al., 1998]).

(. 3).

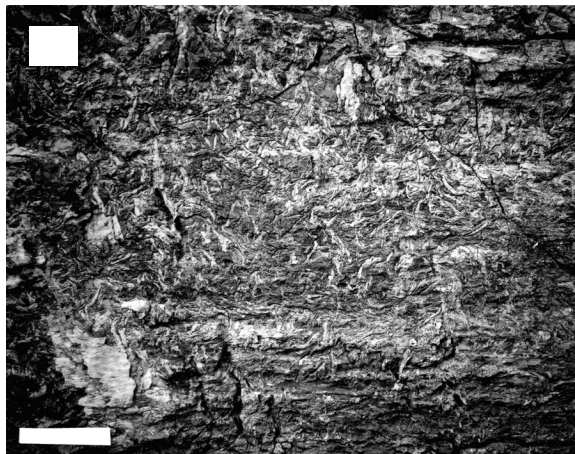
XX-

MOLAR TOOTH STRUCTURE –

1. - -
 - MT-
 - , -
 - 20 .



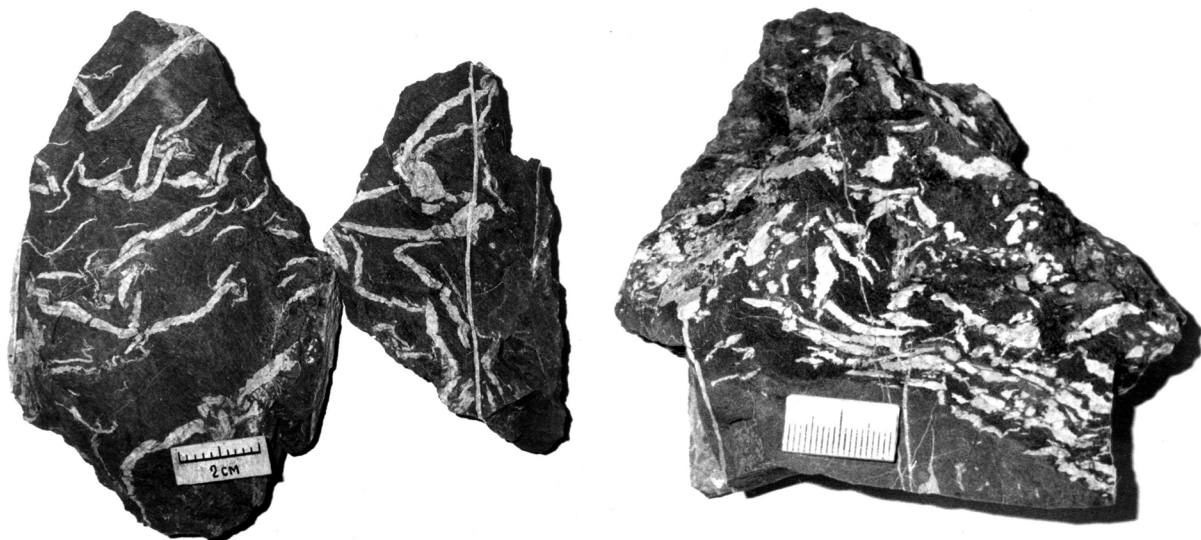
50
 40
 , , , , , ,
 , , .
 [Fairchild et al., 1997; Furniss et al., 1998; Long, 2002; Meng Xianghua, Ge Ming, 2002, .].



UNESCO/IGCP 447 «
 ».
 2002 .
 [, 2003].
 2003 . 2004 .

32-
 .
 , . [James et al, 1998]
 , , ,
 , - , -
 , , , -
 , , , -
 MTS.
 MT-
 , ,
 ,
 ,
 , . [1962],
 , ,

«...
 » [, 1962, . 54, 55].
 «...
 » [, . 64].
 « » - «
 , , ,
 , , ,
 , , ,
 » [, . 75].
 «...
 » [, . 81].



2. MT- ; - MTS, 2

[(? - . .) , 1983, . 105, 109, 112]. MTS [1993], «...» [..., 1983, . 65]. 10 MTS , 1993, . 63]. «...» [, . 18]. » [, . 63].

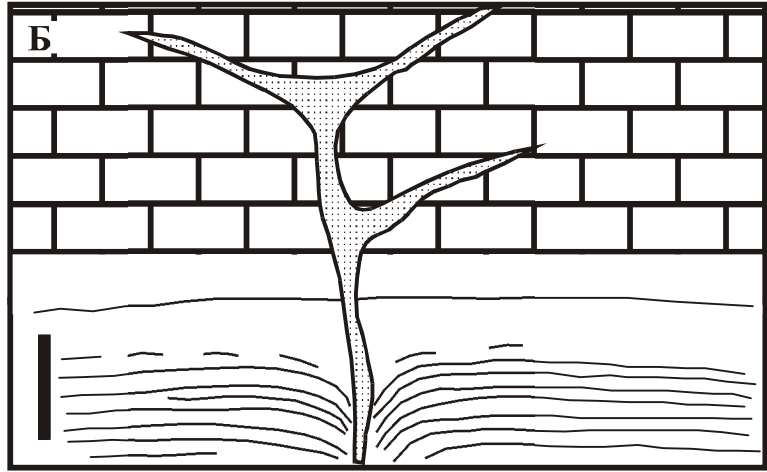
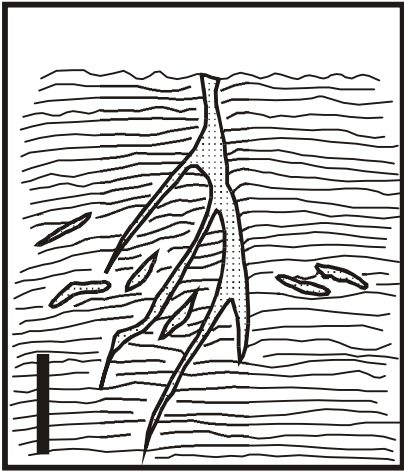
MOLAR TOOTH STRUCTURE –

[, 1998]. , . . . [1981]
 () - 321 72 ,
 MT- - MTS.
 - 1977-1979 -
 « - -
 » -
 [1988] 376 184 -
 MTS
 [1989] 90
 244 -
 [1986]
 : «... ,
 , - -
 - -
 » [, 2002,
 . 8]. -
 MTS -
 3- -
 (, 2003 .) . . -
 , -
 , -
 [1955, 1973, 1978], -
 . . . -
 [1963]. - Rb-Sr, Pb-Pb U-Pb K-Ar,
 . . . 600-635 777-855 . [Guidebook...,

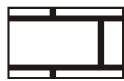
. 3. - ,
 - «
 » (molar tooth structure – MTS). -

- MTS - ,

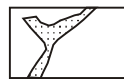




1



2



3

4. « 6 ; - « , ».

2 1 - ; 2 - , 3 -

2002]. (. 1, 2). 50-60 % [Guidebook..., 2002; Newsresearch..., 2002]. (. 3).

« - MTS MT- MTS 10-20 MTS « »

.5.
)

(MTS-

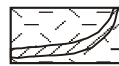
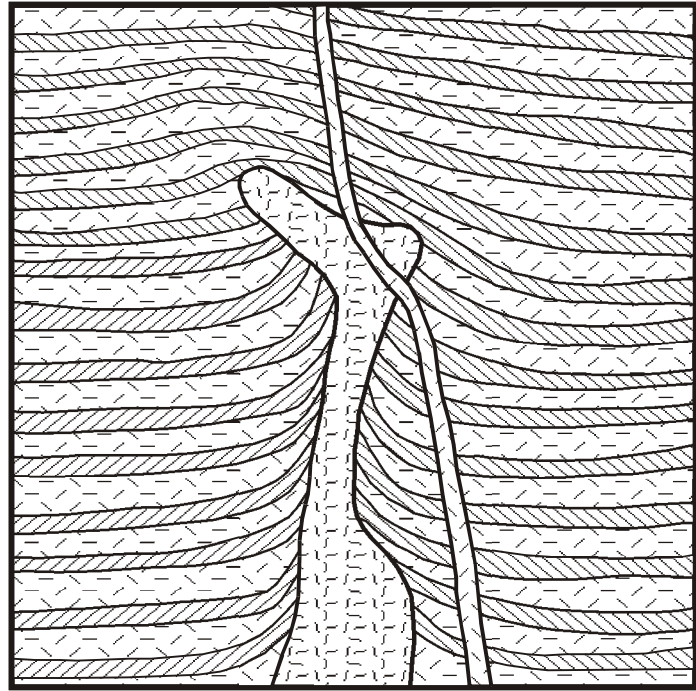
MTS

,
0,2

1 -

; 2 - MTS-

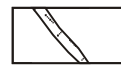
; 3 -



1



2



3

0,2

[Bourrouilh-le et al., 2002].

(. 4). MTS)

0,015

0,005-

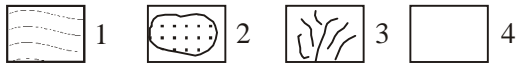
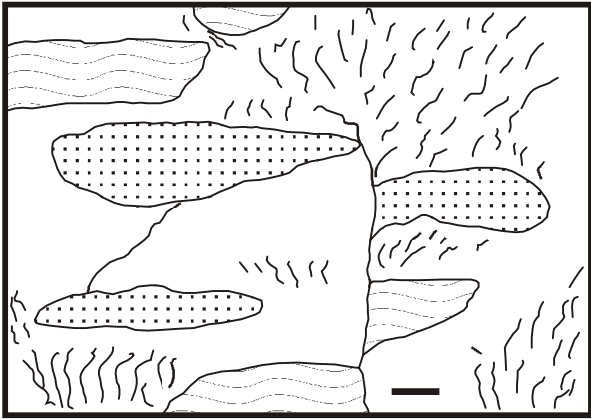
(. 5).

MTS,

MTS

MOLAR TOOTH STRUCTURE –

2520
 ().
 10-15
 MTS, 30-35
 MTS.
 MTS
 MTS
 MTS
 MTS
 (.4).
 [Bourrouilh-le et al., 2001].
 «
 »
 [James et al., 1998].
 [, 1998].
 32-
 MTS
 [Meng Xianghua, Ge Ming, 2002].
 MTS
 MTS
 [James et al., 1998], MTS [, 1993; Pratt, 1998, 1999;
 a . [Ge Ming et al., 2002] Smith, 1968, .]. [Long, 2002]
 29
 MTS.
 700
 1600
 (1800-1900)
 (Wonka)
 (Flinders Rangers) (- (vaterite)
 – 550)

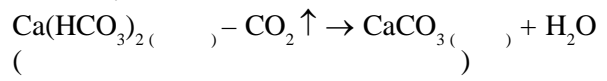


. 6. « -
 ». -
 -
 -
 . -
 , 3 . -
 1 - - ; 2 -
 3 - ; 4 -
 -

, ;
 , (. 4).
 -
 (. 5).
 . . [2004].
 , « » ,
 « » ,
 - (. 6).
 . -
 , -
 - « », -
 , ,
 , -
 - , -
 - , -
 - , -
 - (. 4).
 , , -
 , -
 - « » (. 4).
 - MTS
 (. 3). () , -
 , -

MOLAR TOOTH STRUCTURE –

), – (1960). [,]
, – [, 1965].
[, 1999].
Homo sapiens ,
«...»
;
»
[, 1999, . 1394].
1-1,2
MTS
-
?
MTS
[, 1927].
[2003].



3-4

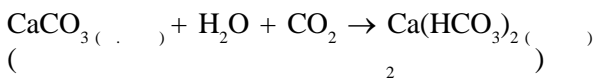
25-30 : 1 4,5 : 1
 [Gebelein, Hoffman, 1973].

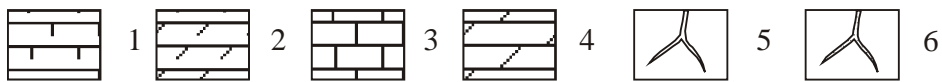
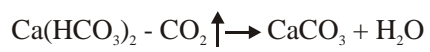
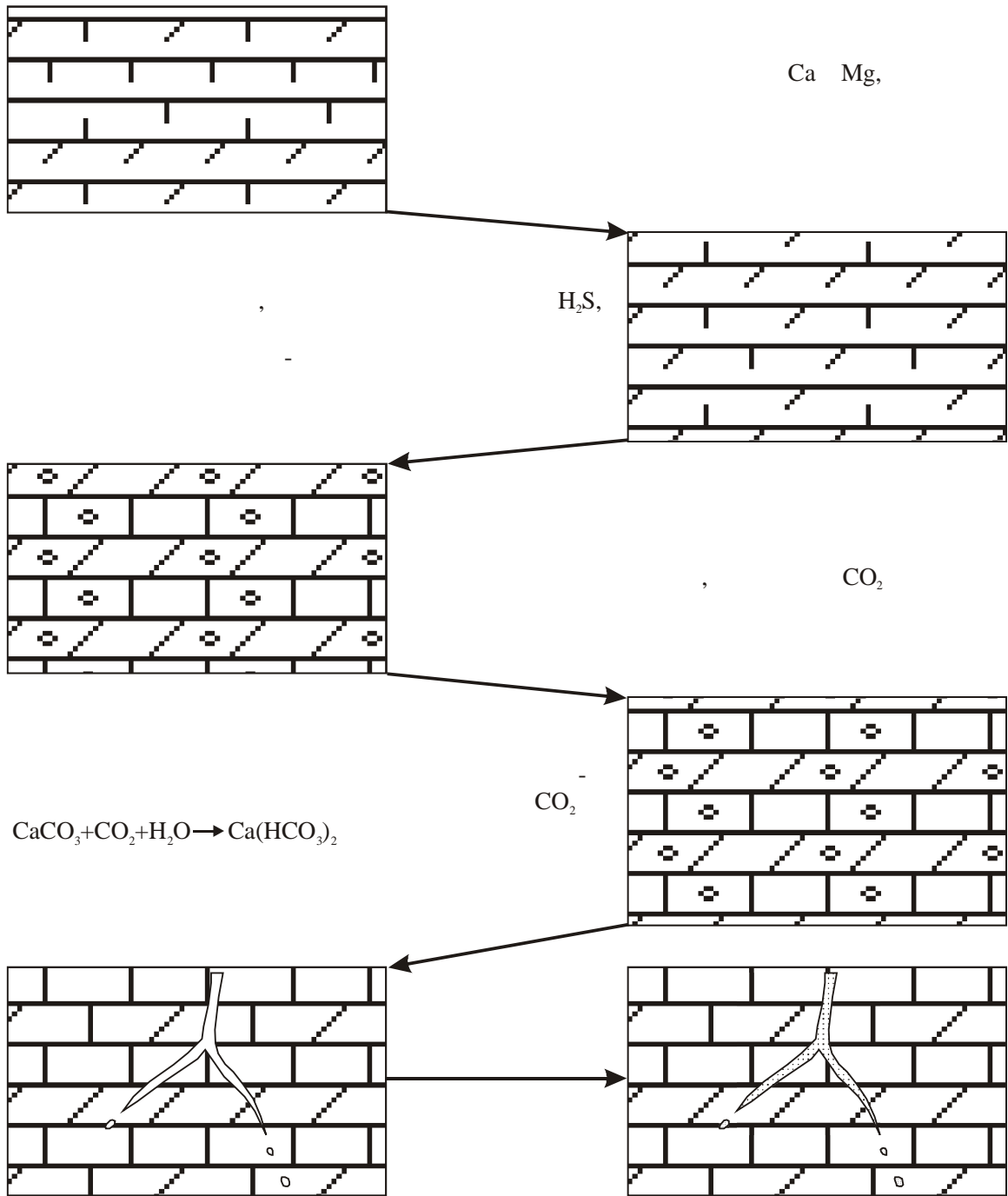
[Baker, Kastner, 1981].

[Vasconcelos, McKenzie, 1997; Vasconcelos et al., 1995].

()
 [, 2001].

MTS





7. MT- ; 2 - ; 3 - ; 4 - ; 5 - ; 6 - ,

MTS.

MOLAR TOOTH STRUCTURE –

UNESCO/IUGS IGCP
 447
 .09.01.040.

, 1927. 368 .
 // . . 5. .
 , 1960. . 238-251.
 , 1965. 355 .
 MTS 1955. . 1. 402 .; . 2. 445 .
 . 7. , 1973. . 1.
 486 .; . 2. 456 .
 , 1978. . 1.
 486 .; . 2. 456 .
 // . . 2001. . 378. 3. . 366-369.
 « . . » (.
)// . . 2003.
 3. . 328-329.
 , 1963.
 447 .
 // . . 2002. . 10. 5.
 . 3-22.
 . . Molar-tooth :
 // . .
 MTS , 2004. . 98-101.
 // . . 1993. . 1. 2.
 [Furniss et al., 1998; Win- . 55-66.
 ston et al., 1999], . . .
 // . . 1998. 6. . 604-628.

1981. 496 .
1989. 590 .
1962. 242 .
1983. 224 .
1999. . 40.
10. . 1389-1396.
1983. 184 .
1988. 540 .
- 1977-1978. 1. 586 ; . 2. 588 ; . 3. 543 .
1986. . 1. 285 ; . 2. 284 .
2003. . 3. 1. . 22-24.
- Baker P., Kastner M.* Constraints of the Formation of Sedimentary Dolomite // *Science*. 1981. V. 213. P. 214-216.
- Bourrouilh-le Jan, Ge Ming, Xianghua Meng, Bourrouilh R.* Silicified molar tooth structure (MTS) of China. An attempt of interpretation // 21st Meeting of IAS. Abstracts and Programme. Davos, 2001. P. 133.
- Bourrouilh-le Jan, Vaslet D., Legendre O.R. et al.* Electron microprobe analysis of molar tooth structures from Dalian, Liaoning province, China // Newsresearch of UNESCO/IUGS IGCP 447. Beijing: China University of Geosciences, 2002. P. 26-27.
- Fairchild I.J., Einsele G., Song T.* Possible seismic origin of molar tooth structures in Neoproterozoic carbonate ramp deposits, north China // *Sedimentology*. 1997. V. 44. . 4. P. 611-636.
- Furniss G., Rittel J.F., Winston D.* Gas bubble and expansion crack origin of «Molar tooth» calcite structures in the Middle Proterozoic Belt Suppergroup, Western Montana // *J. Sed. Res.* 1998. V. 68. . 1. P. 104-114.
- Gebelein C.O., Hoffman P.* Algal origin laminations in stromatolitic limestones // *J. Sed. Petrol.* 1973. V. 43. . 3. P. 602-613.
- Ge Ming, Meng Xianghua, Kuang Hongwei, Cai Guoyin.* Research progress of IGCP Project 447 (Molar tooth Carbonates and the Evaluation of the Earth in the Proterozoic) // Newsresearch of UNESCO/IUGS IGCP 447. Beijing: China University of Geosciences, 2002. P. 3-9.
- Guidebook for Carbonates and Evolution of the Earth in the Proterozoic in China. Beijing: Institute of Sedimentary basin of China University of Geosciences, 2002. 47 p.
- James N.P., Narbonne G.M., Sherman A.G.* Molar-tooth carbonate: shallow subtidal facies of the Mid to Late Proterozoic // *J. Sed. Res.* 1998. V. 68. . 5. P. 716-722.
- Long D.G.F.* Molar-tooth structures – a historical review // Newsresearch of UNESCO/IUGS IGCP 447. Beijing: China University of Geosciences, 2002. P. 19-20.
- Meng Xianghua, Ge Ming.* The sedimentary features of Proterozoic microspar (Molar-tooth) carbonates in China and their significance // *Episodes*. 2002. V. 25. . 3. P. 185-195.
- Newsresearch of UNESCO/IUGS IGCP 447. Beijing: China University of Geosciences, 2002. 79 .
- Pratt B.R.* Molar-tooth structure in Proterozoic carbonates rocks: Origin from synsedimentary earthquake and implications for the nature and evolution of basins and marine sedimentary // *Geol. Soc. Amer. Bull.* 1998. V. 110. . 8. P. 1028-1045.
- Pratt B.R.* Gas bubble and expansion crack origin of Molar tooth calcite structures in the Middle Proterozoic Belt Suppergroup, Western Montana – Discussion // *J. Sed. Res.* 1999. V. 69. . 5. P. 1136-1140.
- Smith A.G.* The origin and deformation of some « molar-tooth» structure in the Precambrian Belt-Purcell supergroup // *J. Geology*. 1968. V. 76. P. 426-433.
- Vasconcelos Cr., McKenzie J.A.* Microbial mediation of modern dolomite precipitation and diagenesis under anoxic conditions (Lagoa Vermelha, Rio de Janeiro, Brazil) // *J. Sed. Res.* 1997. V. 67A. . 3. P. 378-390.
- Vasconcelos Cr., McKenzie Ju., Bernasconi St. et al.* Microbial mediation as a possible mechanism for dolomite formation at low temperatures // *Nature*. 1995. V. 377. P. 220-222.
- Winston D., Rittel J.F., Furniss G.* Gas bubble and expansion crack origin of «Molar tooth» calcite structures in the Middle Proterozoic Belt Suppergroup, Western Montana – Reply // *J. Sed. Res.* 1999. V. 69. . 5. P. 1140-1145.