

This article was downloaded by: [Aston University]

On: 19 January 2014, At: 08:34

Publisher: Taylor & Francis

Informa Ltd Registered in England and Wales Registered Number: 1072954 Registered office: Mortimer House, 37-41 Mortimer Street, London W1T 3JH, UK



## Journal of Systematic Palaeontology

Publication details, including instructions for authors and subscription information:  
<http://www.tandfonline.com/loi/tjsp20>

### The significance of *Suuwassea emilieae* (Dinosauria: Sauropoda) for flagellicaudatan intrarelationships and evolution

Jerald D. Harris <sup>a</sup>

<sup>a</sup> Science Department , Dixie State College , 225 South 700 East, St. George, UT, 84770, USA

Published online: 09 Mar 2010.

To cite this article: Jerald D. Harris (2006) The significance of *Suuwassea emilieae* (Dinosauria: Sauropoda) for flagellicaudatan intrarelationships and evolution, *Journal of Systematic Palaeontology*, 4:2, 185-198, DOI: [10.1017/S1477201906001805](https://doi.org/10.1017/S1477201906001805)

To link to this article: <http://dx.doi.org/10.1017/S1477201906001805>

PLEASE SCROLL DOWN FOR ARTICLE

Taylor & Francis makes every effort to ensure the accuracy of all the information (the "Content") contained in the publications on our platform. However, Taylor & Francis, our agents, and our licensors make no representations or warranties whatsoever as to the accuracy, completeness, or suitability for any purpose of the Content. Any opinions and views expressed in this publication are the opinions and views of the authors, and are not the views of or endorsed by Taylor & Francis. The accuracy of the Content should not be relied upon and should be independently verified with primary sources of information. Taylor and Francis shall not be liable for any losses, actions, claims, proceedings, demands, costs, expenses, damages, and other liabilities whatsoever or howsoever caused arising directly or indirectly in connection with, in relation to or arising out of the use of the Content.

This article may be used for research, teaching, and private study purposes. Any substantial or systematic reproduction, redistribution, reselling, loan, sub-licensing, systematic supply, or distribution in any form to anyone is expressly forbidden. Terms & Conditions of access and use can be found at <http://www.tandfonline.com/page/terms-and-conditions>

# THE SIGNIFICANCE OF *SUWASSEA* *EMILIEAE* (DINOSAURIA: SAUROPODA) FOR FLAGELLICAUDATAN INTRARELATIONSHIPS AND EVOLUTION

**Jerald D. Harris**

Science Department, Dixie State College, 225 South 700 East, St. George, UT 84770, USA

**SYNOPSIS** *Suuwassea emilieae* is a recently described dinosaur taxon discovered in the Upper Jurassic Morrison Formation of the western United States and the only non-diplodocid flagellicaudatan (Dinosauria: Sauropoda) known from North America. It retains sauropod symplesiomorphies that are unexpected in a Late Jurassic taxon and thus sheds light on the evolutionary origins of the Flagellicaudata. Despite being comparatively small, the holotype of *Suuwassea* demonstrates hallmarks of relatively advanced age. A phylogenetic analysis of 30 taxa and 331 characters retains *Suuwassea* in a trichotomy with the Diplodocidae (*Apatosaurus* + (*Diplodocus* + *Barosaurus*)) and the Dicraeosauridae (*Dicraeosaurus* + *Amargasaurus*). This lack of resolution is probably due to a combination of missing data, character conflict and poor incorporation of specimens referred to diplodocid taxa that differ from their holotype specimens and species holotypes. Middle Jurassic palaeobiogeographical reconstructions conflict with the hypothetical distribution of flagellicaudatans in the Middle and Late Jurassic based on their phylogeny, implying that physical barriers, such as epeiric seas, were not responsible for limiting their initial radiation. The postparietal foramen shared by *Suuwassea*, *Dicraeosaurus*, *Tornieria* and *Amargasaurus* may correlate to preferred existence in near-shore, terrestrial environments.

**KEY WORDS** Sauropoda, palaeobiogeography, phylogeny, vertebrate palaeontology, Saurischia

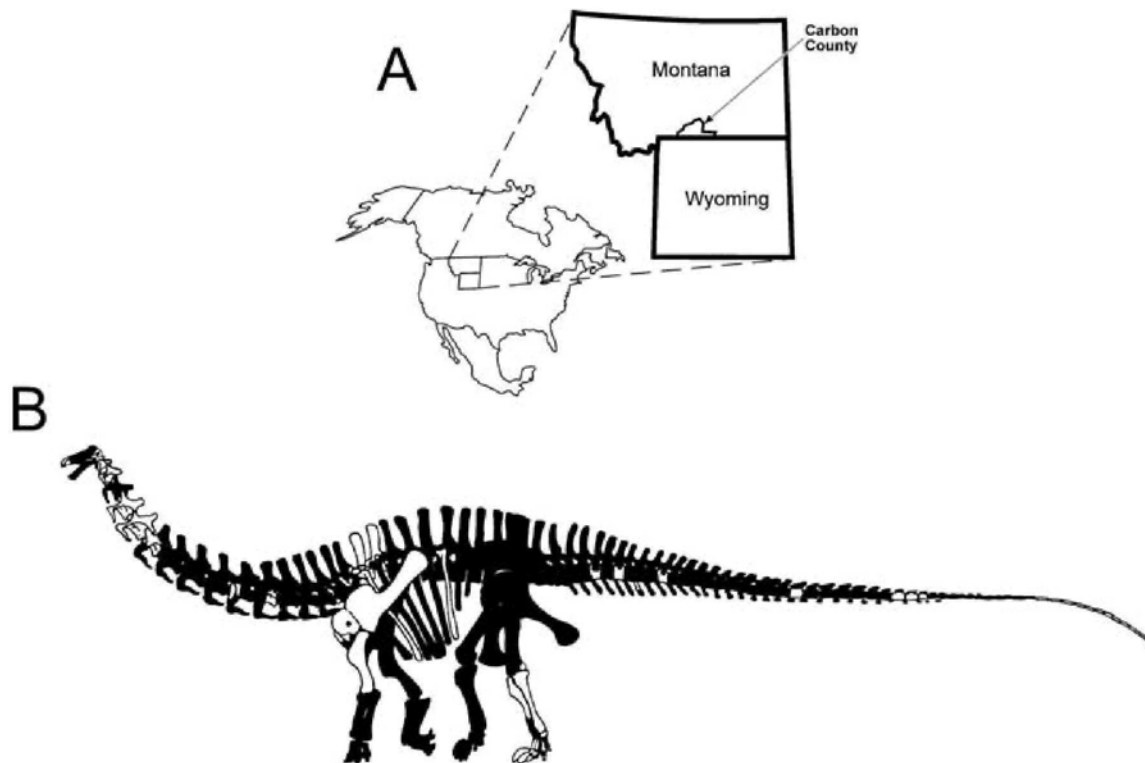
## Contents

Introduction	185
A history of Morrison Formation sauropods	186
Flagellicaudatan ontogeny	187
Diplodocoid palaeobiogeography	188
Phylogenetic analysis	188
Methods and materials	188
Results	189
Discussion and conclusions	191
The flagellicaudatan trichotomy	191
<i>Suuwassea</i> as a distinct taxon	192
Flagellicaudatan palaeobiogeography	193
Acknowledgements	194
References	194

## INTRODUCTION

Although by no means required (Kearney & Clark 2003; Norell & Wheeler 2003; Wiens 2003; Wilkinson 2003), complete and abundant specimens (representing the fullest possible data sets) of any taxon are still ideal for establishing and testing morphology-based phylogenetic hypotheses. For a variety of reasons, many sauropod taxa remain known from incomplete and often unique skeletons. Few localities

worldwide can conform to the ideal by producing abundant, intact individuals. For most of the time that sauropods have been studied, the Upper Jurassic Morrison Formation of the western United States has remained virtually unequalled in this respect and its sauropod fauna has thus been a keystone of sauropod research. The Morrison Formation has produced multiple, often spectacular specimens of *Apatosaurus*, *Camarasaurus* and *Diplodocus*, all of which have played critical roles in sauropod phylogenetic and palaeoecological



**Figure 1** A, Locality information for ANS 21122. More specific information has not been provided to prevent unlawful exploitation of site. B, Reconstruction of *Suuwassea emilieae* Harris & Dodson, 2004, with preserved elements indicated in white (drawing by Jason Poole).

research. The highly distinctive and derived morphologies of *Apatosaurus* and *Diplodocus* in particular stand out among sauropods and their origins have remained unclear.

In 1999–2000, a joint team from the University of Pennsylvania and the Academy of Natural Sciences (ANS) recovered a new diplodocoid from the Upper Jurassic Morrison Formation of south-central Montana. ANS 21122, discovered by Dr William Donawick (University of Pennsylvania) and Will Tillet of Lovell, Wyoming, was named *Suuwassea emilieae* by Harris & Dodson (2004; see Fig. 1). ANS 21122 clearly represents a diplodocoid as it displays numerous synapomorphies of that clade. The preliminary phylogenetic analysis presented by Harris & Dodson (2004) recovered a trichotomous Flagellicaudata (the clade consisting of the most recent common ancestor of *Diplodocus* and *Dicraeosaurus* and all its descendants), consisting of *Suuwassea*, the Diplodocidae (*Apatosaurus* + (*Diplodocus* + *Barosaurus*)) and the Dicraeosauridae (*Dicraeosaurus* + *Amargasaurus*). *Suuwassea* is of particular interest because although it is a diplodocoid from the Morrison Formation of North America, it possesses a mosaic of plesiomorphic sauropodan features and character states otherwise diagnostic of either the Gondwanan Dicraeosauridae or Morrison diplodocids. Furthermore, *Suuwassea* is important because it originated from exposures in Montana, farther north than most other described Morrison sauropods. This may demonstrate a palaeobiogeographical division in Morrison sauropod palaeoecology. As a diplodocoid that retains plesiomorphies not seen in *Apatosaurus* and *Diplodocus* (cf. Harris & Dodson 2004), *Suuwassea* sheds light on the origin and evolution of the Flagellicaudata. It is necessary to place *Suuwassea* in a proper historical, chronological and palaeobiogeographical framework to fully understand its importance.

## A HISTORY OF MORRISON FORMATION SAUROPODS

Sauropods were initially discovered in Middle and Upper Jurassic and Lower Cretaceous sediments of Europe and the Upper Cretaceous of India (*Titanosaurus indicus*; see review in Upchurch *et al.* 2004). However, even after over 150 years of collecting, all European and Cretaceous Indian sauropods remain described from only fragmentary skeletons or single elements and were enmeshed in something of a taxonomic morass until largely cleared by Upchurch & Martin (2002, 2003) and Wilson & Upchurch (2003). The first sauropod specimens recovered from the Morrison Formation (Table 1) also follow this pattern: many holotypes consist of fragmentary skeletons or single bones. Many of the holotypes were established in the famous ‘Bone Wars’ competition of the 19th century between Othniel C. Marsh and Edward D. Cope without the benefit of modern taphonomic understanding, so they often consist of elements from multiple taxa. Reconciling the consequent, convoluted specimen assignments has proven a difficult task (e.g. McIntosh & Carpenter 1998) and many taxa were not described more extensively until later in the early 20th century (Table 1). To this day, however, some Morrison discoveries from this era cannot be referred to existing genera, although they have not yet received restudy in a modern context (*Morosaurus agilis* (Marsh 1889; Gilmore 1907) and *Apatosaurus minimus* (Mook 1917)).

A long hiatus followed, during which no new sauropod taxa were established from the Morrison Formation, although several significant advances were made, such as the recognition and description of the skull of *Apatosaurus* (Berman & McIntosh 1978). It was not until the description of specimens from the Dry Mesa Quarry in western Colorado

**Table 1** Chronological timeline of Morrison Formation sauropod discoveries and the status of each taxon.

Taxon	Author and Year of Description	Status	Notes
<i>Amphicoelias</i>	Cope 1877c, 1878	Uncertain	Often considered <i>nomen dubium</i> or synonymous with either <i>Diplodocus</i> or <i>Supersaurus</i> (McIntosh 1997b; Foster 2001); see also Osborn & Mook (1921)
<i>Apatosaurus</i>	Marsh 1877, 1879a, b	Valid	Additional specimens described by Riggs (1903b); Gilmore (1936); see also Berman & McIntosh (1978)
<i>Camarasaurus</i>	Cope 1877b	Valid	Additional specimens described by Osborn & Mook (1921); Gilmore (1925)
<i>Dystrophaeus</i>	Cope 1877a	<i>Nomen dubium</i>	From the Tidwell Member of the Summerville Formation, not the Morrison Formation (Anderson & Lucas 1992; Lucas & Anderson 1997); see also Gillette (1996a, b) and McIntosh (1997a)
<i>Diplodocus</i>	Marsh 1878	Valid	Additional specimens described by Hatcher (1901); Holland (1906, 1924)
' <i>Morosaurus</i> ' <i>agilis</i>	Marsh 1889	Uncertain	See also Gilmore (1907)
<i>Barosaurus</i>	Marsh 1890	Valid	See also Lull (1919)
<i>Brachiosaurus</i>	Riggs 1903a	Valid	See also Carpenter & Tidwell (1998)
<i>Haplocanthosaurus</i>	Hatcher 1903a, b, 1906	Valid	Additional species named by McIntosh & Williams (1988); see also Bilbey <i>et al.</i> (2000)
' <i>Apatosaurus</i> ' <i>minimus</i>	Mook 1917	Uncertain	
<i>Ultrasauros</i>	Jensen 1985 emend. Olshevsky 1991	<i>Nomen dubium</i>	Type scapulocoracoid ref. to <i>Brachiosaurus</i> ; type thoracic vertebra ref. to <i>Supersaurus</i> (Curtice <i>et al.</i> 1996; Curtice & Wilhite 1996)
<i>Dystylosaurus</i>	Jensen 1985	<i>Nomen dubium</i>	Type caudal vertebra ref. to <i>Supersaurus</i> (Curtice & Stadtman 2001)
<i>Supersaurus</i>	Jensen 1985	Provisionally valid	See also Curtice (1995) and Curtice & Stadtman (2001)
<i>Cathetosaurus</i>	Jensen 1988	<i>Nomen dubium</i>	Synonymised with <i>Camarasaurus</i> but retained as <i>C. lewisi</i> (McIntosh <i>et al.</i> 1996b)
<i>Seismosaurus</i>	Gillette 1991	<i>Nomen dubium</i>	Synonymised with <i>Diplodocus</i> ; possibly distinct species (Lucas 2000; Lucas <i>et al.</i> 2004)
<i>Dyslocosaurus</i>	McIntosh <i>et al.</i> 1992	Valid	Possibly from the Lance Formation (Upper Cretaceous), not Morrison Formation
<i>Eobrontosaurus</i>	Filla & Redman 1994, Bakker 1998	<i>Nomen dubium</i>	Synonymised with <i>Camarasaurus</i> (Upchurch <i>et al.</i> 2004)
<i>Suuwassea</i>	Harris & Dodson 2004	Valid	

Note the 80-year hiatus between the discoveries of the valid taxa *Haplocanthosaurus* and *Supersaurus* as well as the predominant tendency of taxa named from 1985 onward to be later synonymised with previously named taxa.

(Miller *et al.* 1991) that new taxa were named (Table 1). Most recently, however, *Suuwassea* has been joined by several, as yet undescribed, specimens, particularly those from the northern reaches of the Morrison Formation depositional basin, which demonstrate some peculiarities when compared to well-known Morrison genera and may ultimately prove to represent additional, distinctive taxa (Wilson & Smith 1996; Erickson & Hanks 2001; H.-J. Kirby Siber, pers. comm. 2003; N. Murphy, pers. comm. 2003).

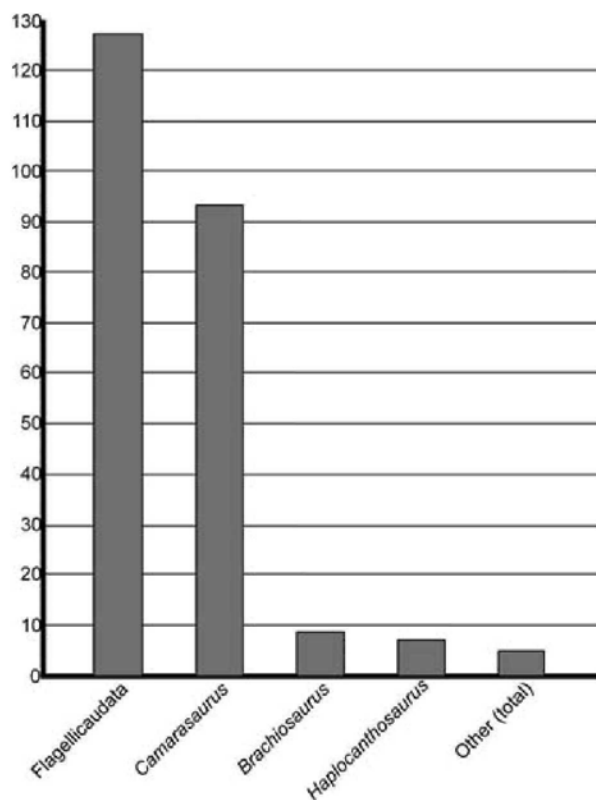
In point of fact, most of the recently-proposed Morrison sauropod genera have been met with a great deal of skepticism and their fate has generally been synonymy (Table 1). Therefore, proposition of a new Morrison Formation sauropod genus such as *Suuwassea* requires substantial support. Many of the distinguishing characteristics of *Suuwassea* are subtle, but certainly no more – and often much less – so than those that are universally accepted as separating *Diplodocus* and *Barosaurus*. The possibility that differences are ontogenetic is discussed below.

The current, genus-level, sauropod inventory of the Upper Jurassic Morrison Formation consists of *Apatosaurus*, *Barosaurus*, *Brachiosaurus*, *Camarasaurus*, *Diplodocus*,

*Haplocanthosaurus* and *Suuwassea*. *Supersaurus* is less well-known but is provisionally valid (Curtice 1995; Curtice & Stadtman 2001) pending a full reanalysis. At a higher taxonomic level, the Morrison Formation sauropod fauna is dominated (in terms of number of individuals) by the basal macronarian (cf. Wilson 2002) *Camarasaurus*, but flagellicaudatan diplodocoids (*Apatosaurus*, *Barosaurus*, *Diplodocus*, *Supersaurus*, *Suuwassea*) are the most diverse (Foster 2003; Fig. 2). *Brachiosaurus* and *Haplocanthosaurus* remain comparatively rare and are restricted to the lower half of the formation (Carpenter 1998, Turner & Peterson 1999).

## FLAGELLICAUDATAN ONTOGENY

Whether the unusual features exhibited by *Suuwassea* are the result of ontogenetic, rather than phylogenetic, differences (Brochu 1996) must be considered. Aside from the fact that it was not a hatchling or very young juvenile, the age of ANS 21122 at the time of death is equivocal. The anatomical terminology used herein follows Harris (2004) with



**Figure 2** Abundances of sauropod taxa in the Morrison Formation based on number of sites producing material identifiable to genus (modified and simplified from Foster 2003). The Flagellicaudata consists of *Apatosaurus*, *Barosaurus*, *Diplodocus*, *Supersaurus* and *Suuwasseea*, and is largest because it contains multiple taxa; individually, each taxon is less common. *Camarasaurus* is the single most common sauropod genus. The category 'Other' sums occurrences of very rare or unique sauropod specimens (*Amphicoelias*, '*Apatosaurus*' *minimus*, *Dyslocosaurus* and '*Morosaurus*' *agilis*.)

emendations of vertebral laminae from Harris (2006b) Some basicranial sutures are obliterated by fusion, but others are visible; some elements (e.g. the supraoccipital) demonstrate both conditions on opposite sides (Harris 2005). The dens is fused to the axis, although the suture line is visible (Harris 2006b). All cervical vertebral arches are seamlessly coalesced with their respective bodies. In crocodylians, both of these features indicate a high maturity index (Brochu 1996). In contrast, the cervical vertebral arches are completely separate from their respective bodies in a juvenile specimen referred to *Apatosaurus* (Carnegie Museum 555/556) despite the fact that these elements are roughly the same size as in ANS 21122. In *Suuwasseea*, arches of the preserved thoracics are fused, although suture lines remain discernible. Those of the proximal and middle caudal vertebrae were unfused (Harris 2006b: fig. 13A), but they were apparently fused on the more distal caudals (Harris 2006b: figs 13E–I). This contrasts with the caudal-to-cranial pattern of fusion during ontogeny seen in crocodylians (Brochu 1996), so it is possible that the crocodylian model does not apply to sauropods. Overall, however, the vertebral features imply that ANS 21122 was by no means a juvenile animal, despite its comparatively small size, but nor was it fully grown.

The ends of preserved limb bones are well-formed. The deltoid ridge on the scapular acromion process is pronounced, which may be an adult feature in sauropods (Bonaparte 1986), although the scapula and coracoid are unfused. Conceivably, calcanei ossify with age in diplodocoids; if so, then ANS 21122 represents a fairly old individual because that element is large and robust (Harris & Dodson 2004; Harris 2005).

Some features present in ANS 21122 that could be perceived as ontogenetic variants are absent in other flagellicaudatans, regardless of size. These features include such structures as the dorsal tuberculum on the humerus and the enormous, elongate dorsal tori on the cranial cervical vertebrae (Harris & Dodson 2004, Harris 2006a, b) that, as muscle and tendon insertion points, are in an advanced state of development. These imply advanced age (Brochu 1996), again despite the small size of the specimen compared to other flagellicaudatans, particularly other Morrison Formation taxa, and the fact that significantly larger specimens of those taxa either lack these same features or have much less developed versions. Therefore, these characters in *Suuwasseea* are more likely to be of genuine phylogenetic value than attributable to issues of maturity.

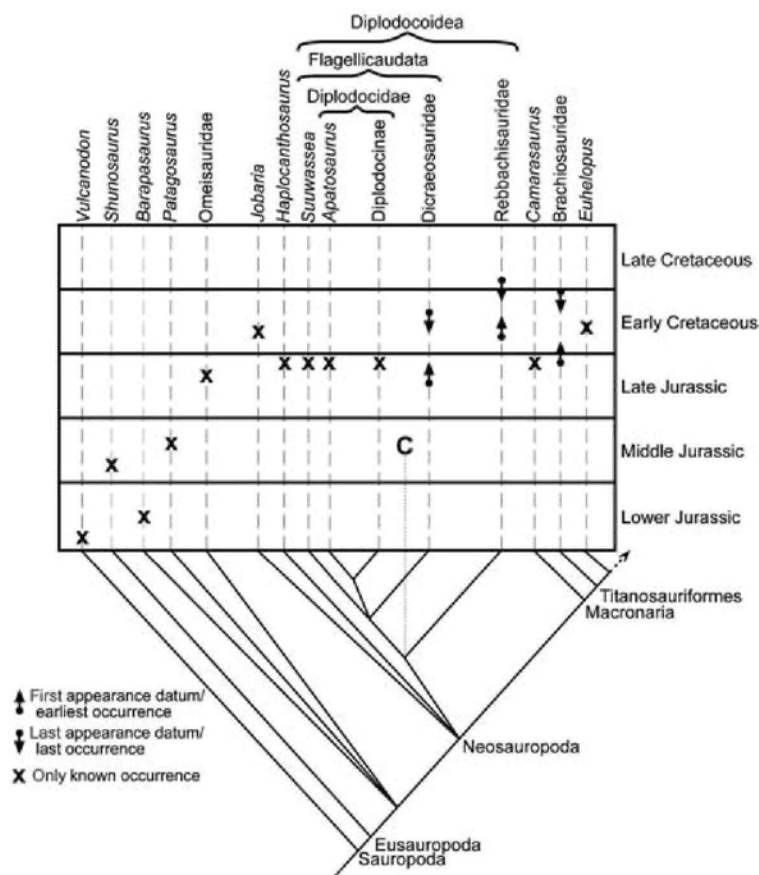
## DIPLODOCOID PALAEOBIOGEOGRAPHY

Until the discovery of basal taxa (the rebbachisaurids *Rebbachisaurus garasbae*, *Limaysaurus* [= *Rebbachisaurus*] *tessonei* and, possibly, *Losillasaurus*), members of the Diplodocoidea were perceived as phylogenetically split into two fundamental radiations: the Dicraeosauridae and the Diplodocidae (Figs 3 & 4). Even in the most comprehensive recent analyses that incorporate them, the Rebbachisauridae invariably fall out as the sister taxon to a flagellicaudatan (Diplodocidae + Dicraeosauridae) dichotomy. The Dicraeosauridae is limited to Africa and South America, but the diplodocid identity of *Tornieria africana* (K. Remes, pers. comm. 2003) demonstrates that members of the more diverse Diplodocidae were more widespread. Why dicraeosaurids apparently never moved into Laurasia while diplodocids did has not been examined (but see below).

## PHYLOGENETIC ANALYSIS

### Methods and materials

The analysis performed by Harris & Dodson (2004) recovered a position for *Suuwasseea* in a trichotomy with the previously recognised clade Diplodocidae + Dicraeosauridae (i.e. the Flagellicaudata). To see if more recent sauropod phylogenetic analyses could resolve this trichotomy, a second cladistic analysis of apomorphic character distributions was performed to elucidate the most parsimonious placement of *Suuwasseea* with respect to other sauropods, particularly diplodocoids. The data matrix (see Supplementary Data available on Cambridge Journals Online on: [http://www.journals.cup.org/abstract\\_S1477201906001805](http://www.journals.cup.org/abstract_S1477201906001805)) combines the matrices and character lists (which can be thought of as incipient or tacit matrices) of Calvo & Salgado (1995), Salgado (1999), Wilson (2002), and Upchurch *et al.* (2004), which receive as prefixes for each character in



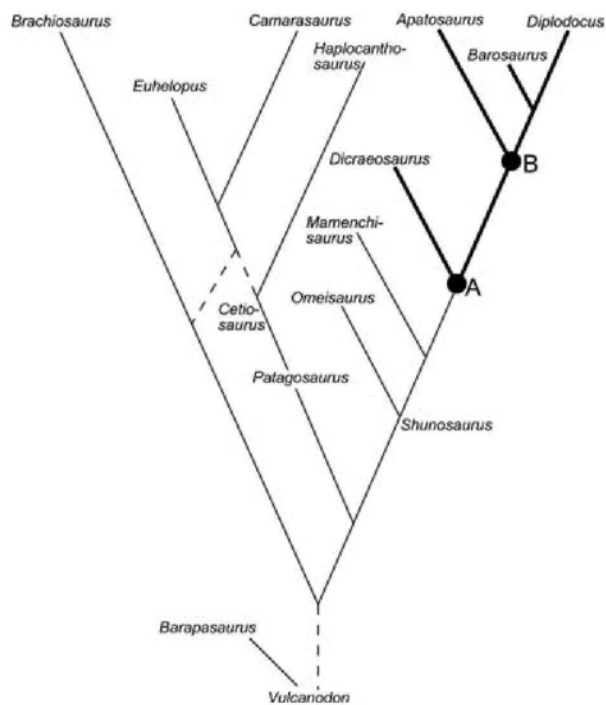
**Figure 3** Sauropod phylogeny (simplified from Harris & Dodson 2004) showing occurrences and ranges of non-titanosaurian taxa, emphasising diplodocoids. The 'C' indicates occurrence of British Museum (Natural History) specimen (BMNH) R.1967, a string of articulated, biconvex distal caudal vertebrae incorrectly referred to *Cetiosauriscus stewarti* (Heathcote 2003), possibly marking the earliest known occurrence of the Diplodocoidea.

this matrix C, S, W and U, respectively (see Supplementary Data: Appendices 1 and 2). Updates for some taxa outlined in Harris & Dodson (2004) were also included. Where possible, duplicate characters were joined into a single character; in some instances, when two characters were similar but not identical, one character was preferentially selected, generally where one state was much more clearly defined than the other. Some characters had to be revised entirely; details are provided in Supplementary Data: Appendix 2. The resultant matrix had 331 characters, six of which were ordered: characters 14, 89, 93 and 284 were ordered following Wilson (2002), while characters 6 and 324 were also ordered because they were combined from two sequential (i.e. tacitly ordered) sets of characters by Upchurch *et al.* (2004; see Supplementary Data: Appendix 2). The matrix was otherwise similar to that used by Harris & Dodson (2004), utilising the taxon set of Wilson (2002), adding only *Suwassea* and *Losillasaurus*. As in Wilson (2002) and Upchurch *et al.* (2004), character polarity was assessed using the Theropoda and Prosauropoda as outgroups. *Losillasaurus*, originally recovered as a basal diplodocoid (Casanovas *et al.* 2001), was retained to see if the new, enlarged matrix used would also clarify its relationships. *Tornieria africana* was specifically left out of the analysis pending restudy (K. Remes, pers. comm. 2003), although if much of the material attributed to this taxon genuinely

pertains to a single species, it is more complete than many other taxa that have been included in previous sauropod phylogenetic analyses. The titanosaurian *Neuquensaurus* was also omitted owing to the incomplete state of its description at the time of the analysis. The final matrix therefore included 30 operational taxonomic units (OTUs). Including, and in addition to, the character state revisions of *Mamenchisaurus* and *Omeisaurus* utilised by Harris & Dodson (2004), several other sources of information (see Supplementary Data: Appendix 1) provided additional data on character states for included taxa. *Suwassea* was coded for 118 out of the 331 characters (roughly 36%).

## Results

Analyses were performed in PAUP\* 4b10 (Swofford 2002). The large number of taxa used precluded an exhaustive search, so following the guidelines used by Wilson (2002), an initial heuristic analysis was performed using random stepwise addition (with 50 replicates) with Maximum trees = 500 000. This analysis produced 72 equally most parsimonious trees (MPTs) with length = 783, consistency index (CI) = 0.526 and retention index (RI) = 0.687. Among these, *Suwassea* occurs in only one of two positions. In half the trees (36), *Suwassea* falls as the sister taxon to the



**Figure 4** The 'traditional' phylogeny of the Sauropoda (modified and simplified from McIntosh 1990). Everything within node A represents what is currently understood as the Diplodocoidea; node B represents the Diplodocidae. In this phylogeny, the position occupied by *Dicraeosaurus* can represent the Dicraeosauridae.

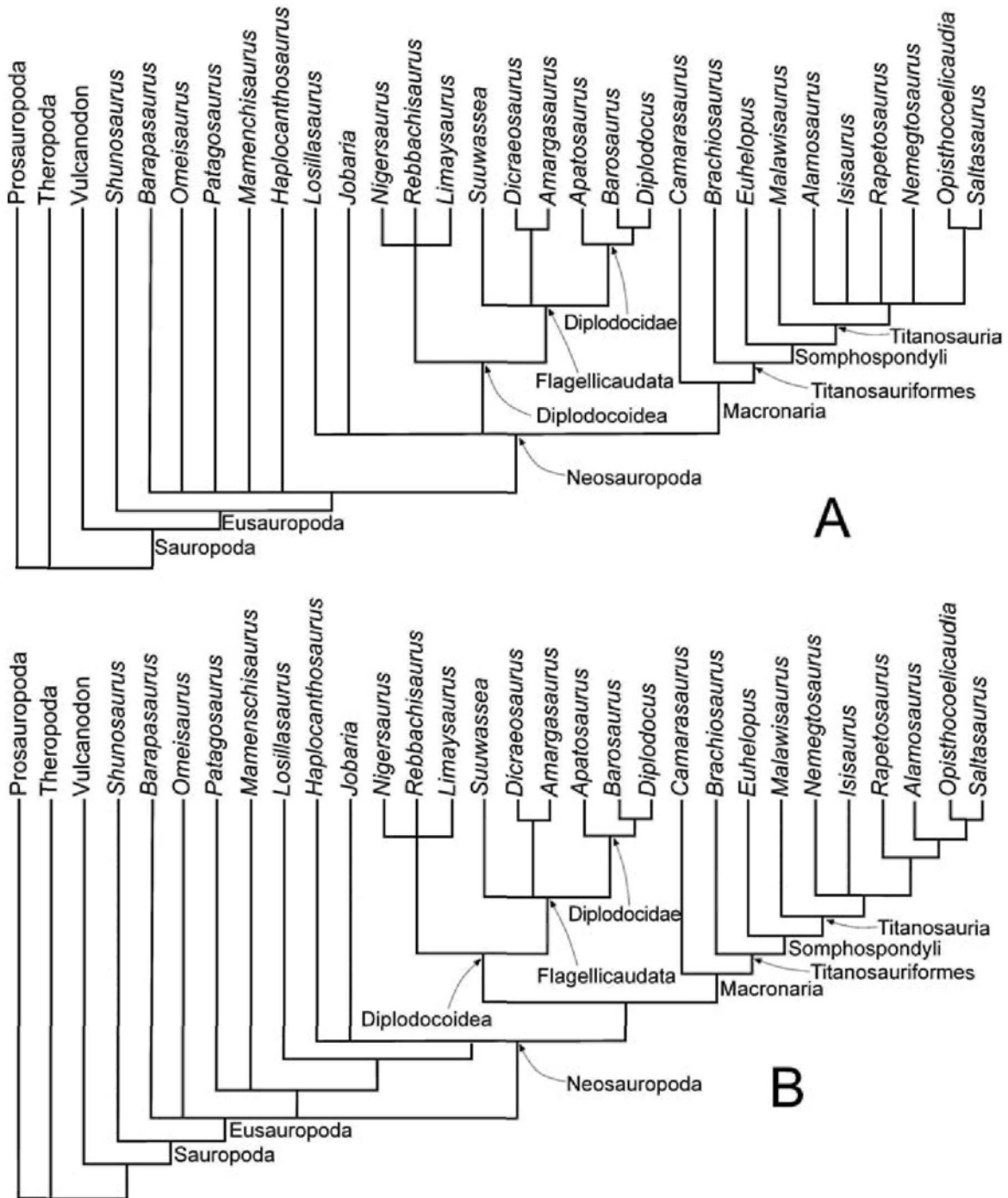
Diplodocidae (*Apatosaurus* + (*Diplodocus* + *Barosaurus*)), united by the following synapomorphies (see Supplementary Data: Appendix 2 for character definitions): 50(1), 65(1), 168(1), 314(1) and 319(1). In the remaining 36 MPTs, *Suuwassea* occurs as the sister taxon to the Dicraeosauridae (*Dicraeosaurus* + *Amargasaurus*), united by synapomorphies 28(0), 33(1), 118(1)\* and 194(1), where an asterisk (\*) denotes a character for which states on the stem below the branch are equivocal. These results reduce by half the number of possible positions recovered by Harris & Dodson (2004) in which *Suuwassea* also occurred as either the sister taxon to *Apatosaurus* within the Diplodocidae or as the sister taxon to the Flagellicaudata (in this latter case, *Suuwassea* is not, by definition (Harris & Dodson, 2004), a flagellicaudatan). In some trees, *Losillasaurus* continued to pair with *Mamenchisaurus* (or as sister to an (*Omeisaurus* + *Mamenchisaurus*) clade), but in others, it branched one step further up the tree than the Chinese taxon, often as a sister taxon to *Patagosaurus* with *Barapasaurus* out one further step.

Consensus trees were computed as follows: both strict and semistrict consensus trees are identical (Fig. 5A) and, predictably, recovered *Suuwassea* in a trichotomy with the Diplodocidae and Dicraeosauridae, the identical position recovered in the less expansive analysis of Harris & Dodson (2004). *Losillasaurus* remained a non-neosauropod. An Adams consensus (Fig. 5B) also recovered the flagellicaudatan trichotomy. This tree differs from the former largely in its fragmentation of the polytomies among the non-neosauropodan eusauropods and within the Titanosauria. *Losillasaurus* retained its prior non-neosauropodan position.

Despite the lack of demonstrable correlation between the information obtained concerning the phylogenetic affinities of a taxon and its degree of completeness in a given data matrix (Kearney & Clark 2003; Wiens 2003; see below), an heuristic analysis that excludes the more poorly known (represented by a high percentage of missing data), non-flagellicaudatan taxa from the matrix (*Haplocanthosaurus*, *Euhelopus*, *Jobaria*, *Malawisaurus*, *Nigersaurus*, *Rebbachisaurus*, *Alamosaurus*, *Losillasaurus*) produced only two trees, with somewhat better statistics (length = 679, CI = 0.602, RI = 0.709). Interestingly, in both trees, *Suuwassea* remained within the Flagellicaudata but as the sister taxon to the Dicraeosauridae, united by synapomorphies 33(1), 104(0)\*, 118(1)\* and 194(1). When *Haplocanthosaurus* and *Malawisaurus* (a presumed basal neosauropod and basal titanosaurian, respectively) were reintroduced, this number increased to four trees (length = 710, CI = 0.577, RI = 0.700), three of which retained a *Suuwassea* + Dicraeosauridae clade (united by synapomorphies 28(0), 33(1), 104(0)\*, 118(1)\* and 194(1)) and one of which found a *Suuwassea* + Diplodocidae clade (united by synapomorphies 50(1), 101(1), 168(1), 314(1) and 319(1)). Strict, semistrict and Adams consensus trees of this analysis recovered, as before, a flagellicaudatan trichotomy, but a 50% majority-rule consensus retained the *Suuwassea* + Dicraeosauridae grouping.

Lastly, both exhaustive and heuristic analyses pruning all taxa except *Suuwassea*, the outgroups (Prosauropoda and Theropoda), diplodocids (*Apatosaurus*, *Barosaurus*, *Diplodocus*), dicraeosaurids (*Amargasaurus*, *Dicraeosaurus*) and the best known rebbachisaurid (*Limaysaurus*) produced a single tree (length = 323, CI = 0.904, RI = 0.884) in which *Suuwassea* was recovered as the sister taxon to the Diplodocidae. These abbreviated analyses demonstrate that some character states convergently evolved by many non-diplodocoid and non-diplodocid taxa have powerful effects on resolution within the Diplodocoidea. This encourages both better descriptions of poorly known taxa as well as the search for more characters that may reduce these effects and clarify resolution within this clade.

A 50% majority bootstrap analysis was also performed on the full matrix (again with Maximum trees = 500 000 and 50 replicates) using the heuristic setting and random stepwise addition (following Wilson 2002). This recovered a single tree (Fig. 6) in which, as in the heuristic consensus trees, *Suuwassea*, the Diplodocidae and the Dicraeosauridae form three trichotomous branches of the Flagellicauda, a clade that has excellent support, higher than that recovered by Harris & Dodson (2004). *Losillasaurus* is retained as a non-neosauropod, close to *Mamenchisaurus*. *Haplocanthosaurus* occurs as a non-diplodocoid, basal neosauropod, contrasting with the position recovered in the non-pruned analysis of Wilson (2002). More exact (i.e. less plastic) positions of *Haplocanthosaurus*, *Jobaria* and *Losillasaurus* across trees may follow more complete descriptions of the latter two taxa and new specimens of *Haplocanthosaurus* (Bilbey *et al.* 2000; Southwell *et al.* 2003). The low tree statistics in the full analyses are probably due in large part to the inclusion of wildcard taxa that are either poorly described (e.g. *Losillasaurus*), poorly known (e.g. *Vulcanodon*, *Nemegtosaurus*), or poorly resolved (either non-neosauropodan eusauropod or titanosaurian). Again, redescrptions using new material of these taxa might increase confidence and resolution in the trees.



**Figure 5** Strict and semistrict (identical: **A**) and Adams (**B**) consensus trees of phylogenetic analysis of relationships of *Suuwassea emilieae* using the data matrix presented in the Supplementary Data. Note that, in both consensus trees, the Flagellicaudata consists of a trichotomy containing *Suuwassea*, the Diplodocidae (*Apatosaurus* + (*Diplodocus* + *Barosaurus*)) and the Dicraeosauridae (*Dicraeosaurus* + *Amargasaurus*). Node (arrows) and stem clade names from Wilson (2002) and Harris & Dodson (2004).

## DISCUSSION AND CONCLUSIONS

### The flagellicaudatan trichotomy

Despite an expanded data matrix, including a 41% increase in the number of characters over the analysis of Harris & Dodson (2004), the phylogeny of the Flagellicaudata was not

clarified and the trichotomy remains. In part, this is probably due to the presence of equivocal states on the stems below the Flagellicaudata for characters 104(1) and 118(1) that otherwise support dicraeosaurid affinities. If these characters are later shown to be present in more primitive taxa, it would diminish support for a *Suuwassea* + Dicraeosauridae clade while strengthening support for a *Suuwassea* + Diplodocidae clade.





two possible positions, as sister taxon to either of the terminal clades (the Diplodocidae and Dicraeosauridae). The resultant consensus trees collapsed the Flagellicaudata into a (probably 'soft') polytomy with those two terminal clades. While the influence of missing data has not been assessed with respect to this lack of resolution, some of it is certainly due to character conflict, particularly with characters indicating diplodocid affinities (50(1), 65(1), 101(1), 168(1), 314(1) and 319(1)) versus those supporting dicraeosaurid affinities (28(0), 33(1), 104(0)\*, 118(1)\* and 194(1)). Conflicting characters may either be perceived as variable within a single taxon (in this case, assuming ANS 21122 were perceived as a specimen of another taxon, such as *Apatosaurus*) or as genuine autapomorphies diagnostic at a lower taxonomic level (a 'genus' or species). Possession of novel characters that have physiological ramifications (such as the postparietal foramen), render less likely intraspecific variation as a valid explanation (i.e. it is unlikely that some individuals of a species have the structure and others lack it). Thus, in addition to its autapomorphies, the conflicting characters most parsimoniously support interpretation of *Suuwassea* as a valid taxon.

For the purpose of facilitating future field identification of a Morrison Formation sauropod specimen as *Suuwassea* (as opposed to as *Apatosaurus*, *Barosaurus*, or *Diplodocus*), and since many of its autapomorphies (Harris & Dodson 2004) are somewhat subtle, it is useful to list traits that, although not autapomorphic for *Suuwassea*, allow a specimen to be distinguished from other currently-known diplodocoids in the Morrison Formation. These include (based on personal observation as well as references listed in Table 1): overall size smaller than *Apatosaurus* or *Diplodocus*, despite relatively advanced age (see 'Flagellicaudatan ontogeny,' above); postparietal foramen present (absent in *Apatosaurus* and *Diplodocus*), small trapezoidal, not recessed below level of skull roof; occipital surface of skull and foramen magnum lie in roughly the same plane (noticeably angled in *Diplodocus*); sagittal nuchal crest sharp (low, rounded and broad in *Apatosaurus* and *Diplodocus*); post-temporal processes lacking dorsal contact with squamosal processes of parietals (contact present in *Apatosaurus*); basal tubercula project caudoventrally (ventrally in *Apatosaurus* and *Diplodocus*); basisphenoid visible between basal tubercula in caudal view (absent in *Apatosaurus* and *Diplodocus*); cranial spinozygapophyseal laminae in cranial cervicals reduced or non-existent (prominent in *Apatosaurus louisae* and *Diplodocus*, reduced in *A. excelsus*); cranial cervical spinous processes situated entirely over caudal margin of vertebral bodies (seen elsewhere only in *Apatosaurus excelsus*); bifurcation of cervical spinous processes begins at cervical 6 (cervical 2 in *Dicraeosaurus*, 3 in *Diplodocus*, 5 in *Apatosaurus louisae*, 5 or possibly 6 in *A. excelsus*); cranial-mid cervical spinous processes broader mediolaterally than craniocaudally with distal lateral expansions (absent in *Diplodocus* and *A. louisae*); spinous processes of cervicals 2–5 with pronounced caudal inclination, reverts to cranial inclination at cervical 6 (no angulation in *Diplodocus*, reversion by cervical 5 in *A. excelsus*); cranial zygapophyseal alae of cervicals 2–5 with caudodorsally concave margins in lateral view (seen elsewhere only in *Apatosaurus louisae* and *Dicraeosaurus*); cervicals 2–6 (at least) with distinct, elongate dorsal tori; dorsalmost point on acromion closer to glenoid fossa than to midpoint of scapular body (opposite condition in *Diplodocus*

and *Barosaurus*); coracoid with rounded craniomedial margin (square in *Apatosaurus*); humerus robust, with proximal and distal ends greatly expanded with respect to mid-body (humerus comparatively slender, with less expanded ends, in *Diplodocus*); one of the first two pedal unguals longer but lower than the other (not present in *Apatosaurus* or *Diplodocus*).

## FLAGELLICAUDATAN PALAEOBIOGEOGRAPHY

The oldest flagellicaudatan remains are from the Middle Jurassic (see above), at which time Pangaea was still in the early stages of fragmentation (e.g. Smith *et al.* 1994). The proximity of most continental land masses at this time may have enabled the earliest flagellicaudatans and their immediate ancestors to disseminate widely during the Middle Jurassic. Their apparent absence in Asia, as reflected by the prolific Middle Jurassic Dashanpu and Late Jurassic Shaximiao and related sauropod localities in China (He *et al.* 1988; Zhang 1988; Ouyang 1989; Dong 1990, 1997; Zhao 1993; Zhang *et al.* 1998; Maisch *et al.* 2001, 2003) and Kirgystan (Alifanov & Averianov 2003), may also date to this period, since Asia was separated from Europe (and all other continents) by an epeiric sea (Russell 1993; Upchurch 1995; Upchurch *et al.* 2002). This marine barrier was not in place in the Bajocian (Smith *et al.* 1994), implying one or more of the following: (1) flagellicaudatans did not evolve until the Bathonian (and the European discoveries are close to being true first appearance data); (2) other physical and/or palaeoecological barriers prevented spread into Asia; (3) taphonomic biases in Asia have precluded the discovery of flagellicaudatans there; or (4) the palaeogeographical understanding of Europe and Asia during this time is incomplete.

Flagellicaudatans have not yet been recognised in the Middle Jurassic of Argentina (Casamiquela 1963; Bonaparte 1986; Rich *et al.* 1999; Weishampel *et al.* 2004), implying either a true absence, taphonomic bias, or the presence of other physical and/or ecological barriers that restricted the earliest flagellicaudatans geographically. However, epicontinental seaways similar to that between Europe and Asia in the Bathonian are reconstructed as separating Europe from North America and Gondwana since the Early Triassic (Smith *et al.* 1994). It is then possible that the earliest flagellicaudatans were truly restricted to Europe. If they were more widespread in the Middle Jurassic, then the seaway separating Europe and Asia at the same time should not have proven an impassable physical barrier to flagellicaudatan dispersal.

The paucity of Middle Jurassic vertebrate fossils globally makes it impossible to assess any of these options: such faunas are well represented only in Patagonia, China, western Europe (Heathcote 2003; Upchurch & Martin 2003) and Morocco (Monbaron 1983; Monbaron *et al.* 1999). Despite the recent recognition of probable ichnological differences between wide-gauge, 'titanosauriform' and narrow-gauge, non-'titanosauriform' taxa (Wilson & Carrano 1999), which broadens the dataset with which to perform such a test, even the trackway record of Middle Jurassic sauropods is sparse, with specimens stemming largely from the same landmasses as the body fossil record, i.e. Europe (Santos *et al.* 1994; Whyte & Romano 1994; Avanzini 1997; Day *et al.* 2002, 2004) and northwestern Africa (Ishigaki 1988, 1989;

Meyer & Monbaron 2002). Narrow-gauge (*Parabrontopodus* sensu Lockley *et al.* (1994)) trackways dominate in the Jurassic (Wilson & Carrano 1999) and, although these trackways include ichnotaxa that possess neosauropodan morphology, it is presently impossible to specify whether their makers were flagellicaudatans or non-flagellicaudatan neosauropods.

By the Callovian, North America was physically separated from Gondwana and Europe was isolated by epeiric seas (Smith *et al.* 1994). The presence of diplodocines in the Late Jurassic of both Laurasia (Morrison Formation, Portugal, Germany) and Gondwana (Tendaguru, presuming *Tornieria* to be diplodocine) thus implies that the Diplodocidae must have been present on both land masses prior to this time. Since the Dicraeosauridae is the sister taxon to the Diplodocidae, the first dicraeosaurids must also predate this split. This means that there is no *a priori* reason to presume that dicraeosaurids did not exist in Laurasia and that the lack of any definitive dicraeosaurid fossils in any of the Late Jurassic, flagellicaudatan-producing, Laurasian formations reflects either a pseudo-absence or a regional extinction *sensu* Upchurch *et al.* (2002). Vicariance, therefore, cannot explain the observed restriction of dicraeosaurids to Gondwana. The presence of *Suuwassea*, a non-diplodocid, non-dicraeosaurid flagellicaudatan, in the Morrison Formation alongside true diplodocids supports the hypothesis that dicraeosaurids could also have inhabited North America. Similarly, the lack of diplodocid fossils in Gondwana after the Late Jurassic also reflects either a pseudo-absence or a regional extinction. Both hypotheses remain based on negative evidence.

One feature of *Suuwassea* is particularly interesting in a palaeobiogeographical and palaeoecological light: the postparietal foramen. *Suuwassea* has been hypothesised as belonging to a somewhat different Morrison Formation fauna (or faunal province) than the 'typical' fauna known from more southern parts of the depositional basin (Harris & Dodson 2004), perhaps reflecting a palaeoenvironmental preference, possibly for a palaeoecosystem closer to the sea. Of the three other taxa that possess a postparietal foramen, two – *Dicraeosaurus* and *Tornieria*, both from Tendaguru – are also found in near-shore terrestrial deposits. The palaeoenvironment of the La Amarga Formation in which the remaining taxon, *Amargasaurus*, was preserved, has been interpreted as wholly terrestrial (Leanza & Hugo 2001), although others have interpreted its setting also as being in close proximity the sea (Malumián *et al.* 1983; Montanelli 1987; Andreis 2001; but see discussion in Prámparo & Volkheimer 2002). Even though its function remains unknown, the concurrence of a postparietal foramen in sauropods in near-shore palaeoenvironments is unexpected and may be correlative. If true, the best place to seek other basal flagellicaudatans and dicraeosaurids in the Morrison Formation would be in the northern part of the depositional basin, closer to the sea.

## ACKNOWLEDGEMENTS

Innumerable thanks are given to Dr Paul Upchurch (University College London) for granting advance permission to utilise the data matrix that ultimately was used in Upchurch *et al.* (2004) and for educational discussions on palaeobiogeography. Dr Jeff Wilson (University of Michigan)

patiently and graciously tolerated countless questions concerning various character states and Dr Matt Lamanna (Carnegie Museum of Natural History) made several emendations to the data matrix. Thought-provoking conversations with Brian Curtice, Ray Wilhite (Louisiana State University) and Dr Jack McIntosh (Wesleyan University) allowed for a more thorough consideration of the issues discussed in this paper. The opportunity to work on ANS 21122 was kindly provided by Dr Peter Dodson (University of Pennsylvania) who also provided guidance and thought-provoking, educational discussions. Many years of dialogue and association with Dr Allison Tumarkin-Deratzian (Vassar College), Dr Ken Lacovara (Drexel University), Dr Hailu You (Chinese Academy of Geological Sciences), Dr Matthew Lamanna (Carnegie Museum of Natural History), Dr Hermann Pfefferkorn, Barbara Grandstaff and Mandi Lyon (University of Pennsylvania) were immeasurably helpful. Mrs Lay Chin Tan provided partial translations of some Chinese literature. Editorial comments by Drs Paul Barrett (The Natural History Museum, London), Leonardo Salgado (Universidade del Comahue), Andrew Smith (The Natural History Museum, London), and Jeff Wilson were invaluable and greatly improved the manuscript. The work presented herein formed part of the author's doctoral dissertation completed at the University of Pennsylvania.

## REFERENCES

- Alifanov, V. R. & Averianov, A. O. 2003. *Ferganasaurus verzilini*, gen. et sp. nov., a new neosauropod (Dinosauria, Saurischia, Sauropoda) from the Middle Jurassic of Fergana Valley, Kirghizia. *Journal of Vertebrate Paleontology* **23**: 358–372.
- Anderson, O. J. & Lucas, S. G. 1992. The Middle Jurassic Summerville Formation, northern New Mexico. *New Mexico Geology* **14**: 79–92.
- Andreis, R. R. 2001. Paleocology and environments of the Cretaceous sedimentary basins of Patagonia (southern Argentina). Pp. 7–14 in *VII International Symposium on Mesozoic Terrestrial Ecosystems. Asociación Paleontológica Argentina Publicación Especial 7*. Asociación Paleontológica Argentina: Buenos Aires.
- Archibald, J. D. 1994. Metataxon concepts and assessing possible ancestry using phylogenetic systematics. *Systematic Biology* **43**: 27–40.
- Avanzini, M. 1997. Impronte di sauropodi nel Giurassico inferiore del Becco di Filadonna (Piattaforma di Trento – Italia settentrionale). *Studi Trentini di Scienze Naturali – Acta Geologica* **72**: 117–122.
- Bakker, R. T. 1998. Dinosaur mid-life crisis: the Jurassic–Cretaceous transition in Wyoming and Colorado. Pp. 67–77 in Lucas, S. G., Kirkland, J. I. & Estep, J. W. (eds) *Lower and Middle Cretaceous Terrestrial Ecosystems. New Mexico Museum of Natural History and Science Bulletin* **14**. New Mexico Museum of Natural History and Science: Albuquerque.
- Berman, D. S. & McIntosh, J. S. 1978. Skull and relationships of the Upper Jurassic sauropod *Apatosaurus* (Reptilia, Saurischia). *Bulletin of the Carnegie Museum of Natural History* **8**: 5–35.
- Bilbey, S. A., Hall, J. E. & Hall, D. A. 2000. Preliminary results on a new haplocanthosaurid sauropod dinosaur from the lower Morrison Formation of northeastern Utah. *Journal of Vertebrate Paleontology* **20** (suppl. 3): 30A.
- Bonaparte, J. F. 1986. Les dinosaures (Carnosaures, Allosauridés, Sauropodes, Cétiosauridés) du Jurassique Moyen de Cerro Cándor (Chubut, Argentine). *Annales de Paléontologie (Vert.-Invert.)* **72**: 325–386.
- 1999. Evolución de las vértebras presacras en Sauropodomorpha. *Ameghiniana* **36**: 115–187.
- Brochu, C. A. 1996. Closure of neurocentral sutures during crocodylian ontogeny: implications for maturity assessment in fossil archosaurs. *Journal of Vertebrate Paleontology* **16**: 49–62.

- Calvo, J. O. & Salgado, L. 1995. *Rebbachisaurus tessonei* sp. nov. A new Sauropoda from the Albian–Cenomanina of Argentina; new evidence of the origin of the Diplodocidae. *Gaia* **11**: 13–33.
- Carpenter, K. 1998. Vertebrate biostratigraphy of the Morrison Formation near Cañon City, Colorado. Pp. 407–426 in Carpenter, K., Chure, D. J. & Kirkland, J. I. (eds) *The Upper Jurassic Morrison Formation: an interdisciplinary study*. *Modern Geology* **23**. Gordon and Breach Science Publishers: Amsterdam.
- Carpenter, K. & Tidwell, V. 1998. Preliminary description of a *Brachiosaurus* skull from Felch Quarry 1, Garden Park, Colorado. Pp. 69–84 in Carpenter, K., Chure, D. J. & Kirkland, J. I. (eds), *The Upper Jurassic Morrison Formation: an interdisciplinary study*. *Modern Geology* **23**. Gordon and Breach Science Publishers: Amsterdam.
- Casamiquela, R. M. 1963. Consideraciones acerca de *Amygdalodon Cabrera* (Sauropoda, Cetiosauridae) del Jurásico Medio de la Patagonia. *Ameghiniana* **3**: 79–95.
- Casanovas, M. L., Santafé, J. V. & Sanz, J. L. 2001. *Losillasaurus giganteus*, un nuevo saurópodo del tránsito Jurásico–Cretácico de la cuenca de ‘Los Serranos’ (Valencia, España). *Paleontología i Evolució* **32–33**: 99–122.
- Chatterjee, S. & Zheng, Z. 2002. Cranial anatomy of *Shunosaurus*, a basal sauropod dinosaur from the Middle Jurassic of China. *Zoological Journal of the Linnean Society* **136**: 145–169.
- Cope, E. D. 1877a. On a dinosaurian from the Trias of Utah. *Proceedings of the American Philosophical Society* **16**: 579–584.
- 1877b. On a gigantic saurian from the Dakota epoch of Colorado. *Paleontological Bulletin* **25**: 5–10.
- 1877c. On *Amphicoelias*, a genus of Saurians from the Dakota epoch of Colorado. *Paleontological Bulletin* **27**: 2–5.
- 1878. A new species of *Amphicoelias*. *American Naturalist* **13**: 563–564.
- Curry, K. A. 2001. *The evolutionary history of the Titanosauria*. Unpublished PhD Thesis., State University of New York: Stony Brook, 552 pp.
- Curtice, B. D. 1995. A description of the anterior caudal vertebrae of *Supersaurus vivianae*. *Journal of Vertebrate Paleontology* **15** (suppl. 3): 25A.
- & Stadtman, K. 2001. The demise of *Dystylosaurus edwini* and a revision of *Supersaurus vivianae*. Pp. 33–40 in McCord, R. D. & Boaz, D. (eds) *Western Association of Vertebrate Paleontologists and Southwest Paleontological Symposium – Proceedings 2001*. *Mesa Southwest Museum Bulletin* **8**. Mesa Southwest Museum: Mesa.
- & Wilhite, D. R. 1996. A re-evaluation of the Dry Mesa Dinosaur Quarry sauropod fauna with a description of juvenile sauropod elements. Pp. 325–338 in Huffman, A. C., Jr., Lund, W. R. & Godwin, L. H. (eds) *Geology and Resources of the Paradox Basin*. *Utah Geological Association Guidebook* **25**. Utah Geological Association: Salt Lake City.
- , Stadtman, K. L. & Curtice, L. J. 1996. A reassessment of *Ultrasaurus macintoshi* (Jensen, 1985). Pp. 87–95 in Morales M. (ed.) *The Continental Jurassic*. *Museum of Northern Arizona Bulletin* **60**. Museum of Northern Arizona: Flagstaff.
- Day, J. J., Norman, D. B., Upchurch, P. & Powell, H. P. 2002. Dinosaur locomotion from a new trackway. *Nature* **415**: 494–495.
- , —, Gale, A. S., Upchurch, P. & Powell, H. P. 2004. A Middle Jurassic dinosaur trackway site from Oxfordshire, UK. *Palaeontology* **47**: 319–348.
- Dong, Z. 1990. On remains of the sauropods from Kelamaili region, Junggar Basin, Xinjiang, China. *Vertebrata Palasiatica* **28**: 43–58.
- 1997. A gigantic sauropod (*Hudiesaurus sinojapanorum* gen. et sp. nov.) from the Turpan Basin, China. Pp. 102–110 in Dong, Z. (ed.) *Sino-Japanese Silk Road Dinosaur Expedition*. China Ocean Press: Beijing.
- Erickson, B. R. & Hanks, H. 2001. A puzzling young diplodocid. *Journal of Vertebrate Paleontology* **21** (suppl. 3): 21A.
- Filla, J. & Redman, P. D. 1994. *Apatosaurus yahnaipin*: a preliminary description of a new species of diplodocid dinosaur from the Late Jurassic Morrison Formation of southern Wyoming, the first sauropod dinosaur found with a complete set of ‘belly ribs’. Pp. 159–178 in Nelson, G. E. (ed.) *The Dinosaurs of Wyoming*. *Wyoming Geological Association 44th Annual Field Conference Guidebook*. Wyoming Geological Association: Casper.
- Foster, J. R. 1996. Sauropod dinosaurs of the Morrison Formation (Upper Jurassic), Black Hills, South Dakota and Wyoming. *University of Wyoming Contributions to Geology* **31**: 1–25.
- 2001. Relative abundances of the Sauropoda (Dinosauria, Saurischia) of the Morrison Formation and implications for Late Jurassic paleoecology of North America. Pp. 47–60 in McCord, R. D. & Boaz, D. (eds) *Western Association of Vertebrate Paleontologists and Southwest Paleontological Symposium – Proceedings 2001*. *Mesa Southwest Museum Bulletin* **8**. Mesa Southwest Museum: Mesa.
- 2003. Paleocological analysis of the vertebrate fauna of the Morrison Formation (Upper Jurassic), Rocky Mountain region, USA. *New Mexico Museum of Natural History and Science Bulletin* **23**: 1–95.
- Galton, P. M. 1984. Cranial anatomy of the prosauropod dinosaur *Plateosaurus* from the Knollenmergel (Middle Keuper, Upper Triassic) of Germany I. *Geologica et Palaeontologica* **18**: 139–171.
- Gillette, D. D. 1991. *Seismosaurus halli* gen. et sp. nov., a new sauropod dinosaur from the Morrison Formation (Upper Jurassic/Lower Cretaceous) of New Mexico, USA. *Journal of Vertebrate Paleontology* **11**: 417–433.
- 1996a. Origin and early evolution of the sauropod dinosaurs of North America: the type locality and stratigraphic position of *Dystrophaeus viaemalae* Cope 1877. Pp. 313–324 in Huffman, A. C., Jr., Lund, W. R. & Godwin, L. H. (eds) *Geology and Resources of the Paradox Basin*. *Utah Geological Association Guidebook* **25**. Utah Geological Association: Salt Lake City.
- Gillette, D. D. 1996b. Stratigraphic position of the sauropod *Dystrophaeus viaemalae* Cope 1887 and its evolutionary implications. Pp. 59–68 in Morales, M. (ed.) *The Continental Jurassic*. *Museum of Northern Arizona Bulletin* **60**. Museum of Northern Arizona: Flagstaff.
- Gilmore, C. W. 1907. The type of the Jurassic reptile *Morosaurus agilis* redescribed, with a note on *Camptosaurus*. *Proceedings of the United States National Museum* **32**: 151–165.
- 1925. A nearly complete articulated skeleton of *Camarasaurus*, a saurischian dinosaur from the Dinosaur National Monument, Utah. *Memoirs of the Carnegie Museum* **10**: 347–384.
- 1936. Osteology of *Apatosaurus*, with special reference to specimens in the Carnegie Museum. *Memoirs of the Carnegie Museum* **11**: 175–271.
- Gomani, E. M. 1999. *Dinosaurs of the Cretaceous Sedimentary Rocks of Northern Malawi, Africa*. Unpublished PhD thesis Southern Methodist University, Dallas, 257 pp.
- Harris, J. D. 2004. Confusing dinosaurs with mammals: tetrapod phylogenetics and anatomical terminology in the world of homology. *Anatomical Record Part A* **281**: 1240–1246.
- Harris, J. D. 2005. Cranial osteology of *Suuwassea emilieae* (Sauropoda: Flagellicaudata) from the Upper Jurassic Morrison Formation of Montana, U.S.A. *Journal of Vertebrate Paleontology* (in press).
- Harris, J. D. 2006a. The appendicular skeleton of *Suuwassea emilieae* (Sauropoda: Flagellicaudata) from the Upper Jurassic Morrison Formation of Montana, U.S.A. *Geobios*. (submitted).
- Harris, J. D. 2006b. The axial skeleton of *Suuwassea emilieae* (Sauropoda: Flagellicaudata) from the Upper Jurassic Morrison Formation of Montana, USA. *Palaeontology*. (submitted).
- & Dodson, P. 2004. A new diplodocid sauropod dinosaur from the Upper Jurassic Morrison Formation of Montana, USA. *Acta Palaeontologica Polonica* **49**: 197–210.
- Hatcher, J. B. 1901. *Diplodocus* (Marsh): its osteology, taxonomy, and probable habits, with a restoration of the skeleton. *Memoirs of the Carnegie Museum* **1**: 1–63.
- 1903a. A new sauropod dinosaur from the Jurassic of Colorado. *Proceedings of the Biological Society of Washington* **16**: 1–2.
- 1903b. A new name for the dinosaur *Haplacanthus* Hatcher. *Proceedings of the Biological Society of Washington* **16**: 100.
- 1906. Osteology of *Haplacanthosaurus*, with description of a new species, and remarks on the probable habits of the Sauropoda and the

- age and origin of the *Atlantosaurus* beds. *Memoirs of the Carnegie Museum* 2: 1–75.
- He, X., Li, K. & Cai, K. 1988. *The Middle Jurassic Dinosaur Fauna from Dashanpu, Zigong, Sichuan, Vol. IV. Sauropod Dinosaurs (2): Omeisaurus tianfuensis*. Sichuan Publishing House of Science and Technology: Chengdu, 143 pp.
- Heathcote, J. 2003. The relationships of *Cetiosauriscus stewarti* (Dinosauria: Sauropoda): implications for sauropod phylogeny. *Journal of Vertebrate Paleontology* 23: 60A.
- Holland, W. J. 1906. The osteology of *Diplodocus* Marsh, with special reference to the restoration of the skeleton of *Diplodocus carnegiei* Hatcher. *Memoirs of the Carnegie Museum* 2: 225–264.
- 1915. Heads and tails, a few notes relating to the structure of the sauropod dinosaurs. *Annals of the Carnegie Museum* 9: 273–278.
- 1924. The skull of *Diplodocus*. *Memoirs of the Carnegie Museum* 9: 379–403.
- Ishigaki, S. 1988. Les empreintes de Dinosauries du Jurassique inférieur du Haut Atlas central marocain. *Notes et Mémoires du Service Géologique du Maroc* 44: 79–86.
- 1989. Footprints of swimming sauropods from Morocco. Pp. 83–86 in Gillette, D. D. & Lockley, M. G. (eds) *Dinosaur tracks and traces*. Cambridge University Press: Cambridge.
- Jacobs, L. L., Winkler, D. A., Downs, W. R. & Gomani, E. M. 1993. New material of an Early Cretaceous titanosaurid sauropod dinosaur from Malawi. *Palaeontology* 36: 523–534.
- Janensch, W. 1929a. Die Wirbelsäule der Gattung *Dicraeosaurus*. *Palaeontographica* 2: 35–133.
- 1929b. Material und Formengehalt der Sauropoden in der Ausbeute der Tendaguru-Expedition. *Palaeontographica* 2: 1–34.
- 1935–1936. Die Schädel der Sauropoden *Brachiosaurus*, *Barosaurus* und *Dicraeosaurus* aus den Tendaguru-schichten Deutsch-Ostafrikas. *Palaeontographica* 2: 145–298.
- 1950. Die Wirbelsäule von *Brachiosaurus brancai*. *Palaeontographica Suppl.* 7: 31–93.
- 1961. Die Gliedmaszen und Gliedmaszengürtel der Sauropoden der Tendaguru-Schichten. *Palaeontographica Suppl.* 17: 177–235.
- Jensen, J. A. 1985. Three new sauropod dinosaurs from the Upper Jurassic of Colorado. *Great Basin Naturalist* 45: 697–709.
- 1988. A fourth new sauropod dinosaur from the Upper Jurassic of the Colorado Plateau and sauropod bipedalism. *Great Basin Naturalist* 48: 121–145.
- Kearney, M. & Clark, J. M. 2003. Problems due to missing data in phylogenetic analyses including fossils: a critical review. *Journal of Vertebrate Paleontology* 23: 263–274.
- Lamanna, M. C., Martínez, R., Luna, M., Casal, G., Dodson, P. & Smith, J. B. 2001. Sauropod faunal transition through the Cretaceous Chubut Group of central Patagonia. *Journal of Vertebrate Paleontology* 21 (suppl. 3): 71A.
- Lawson, D. A. 1972. *Paleoecology of the Tornillo Formation, Big Bend National Park, Brewster County, Texas*. Unpublished Msc Thesis. University of Texas, Austin, 182 pp.
- Leanza, H. A. & Hugo, C. A. 2001. Cretaceous red beds from southern Neuquén Basin (Argentina): age, distribution and stratigraphic discontinuities. Pp. 117–122 in *VII International Symposium on Mesozoic Terrestrial Ecosystems. Asociación Paleontológica Argentina Publicación Especial 7*. Asociación Paleontológica Argentina: Buenos Aires.
- Lehman, T. M. & Coulson, A. B. 2002. A juvenile specimen of the sauropod dinosaur *Alamosaurus sanjuanensis* from the Upper Cretaceous of Big Bend National Park, Texas. *Journal of Paleontology* 76: 156–172.
- Lockley, M. G., Farlow, J. O. & Meyer, C. A. 1994. *Brontopodus* and *Parabrontopodus* ichnogen. nov. and the significance of wide- and narrow-gauge sauropod trackways. Pp. 135–145 in Lockley, M. G., dos Santos, V. F., Meyer, C. A. & Hunt, A. (eds) *Aspects of Sauropod Paleobiology*. *Gaia* 10. Universidade de Lisboa: Lisbon.
- Lucas, S. G. 2000. The gastromyths of ‘*Seismosaurus*,’ a Late Jurassic dinosaur from New Mexico. Pp. 61–67 in Lucas, S. G. & Heckert, A. B. (eds) *Dinosaurs of New Mexico*. *New Mexico Museum of Natural History and Science Bulletin* 17. New Mexico Museum of Natural History and Science: Albuquerque.
- & Anderson, O. J. 1997. The Jurassic San Rafael Group, Four Corners Region. Pp. 115–132 in Anderson, O. J., Kues, B. S. & Lucas, S. G. (eds) *Mesozoic Geology and Paleontology of the Four Corners Region*. *New Mexico Geological Society Field Conference Guidebook* 48. New Mexico Geological Society: Socorro.
- , Herne, M. C., Heckert, A. B., Hunt, A. G. & Sullivan, R. M. 2004. Reappraisal of *Seismosaurus*, a Late Jurassic sauropod dinosaur from New Mexico. *Geological Society of America Abstracts with Programs* 36: 422.
- Lull, R. S. 1919. The sauropod dinosaur *Barosaurus* Marsh. *Memoirs of the Connecticut Academy of Arts and Sciences* 6: 1–42.
- Maddison, W. 1989. Reconstructing character evolution on polytomous cladograms. *Cladistics* 5: 565–577.
- Madsen, J. H., Jr., McIntosh, J. S. & Berman, D. S. 1995. Skull and atlas-axis complex of the Upper Jurassic sauropod *Camarasaurus* Cope (Reptilia: Saurischia). *Bulletin of the Carnegie Museum of Natural History* 31: 1–115.
- Maisch, M. W., Matzke, A. T., Pfretzschner, H.-U., Sun, G., Stöhr, H. & Grossmann, F. 2003. Fossil vertebrates from the Middle and Upper Jurassic of the southern Junggar Basin (NW China) – results of the Sino-German Expeditions 1999–2000. *Neues Jahrbuch für Geologie und Paläontologie Monatshefte* 2003: 297–313.
- , Matzke, A. T., Pfretzschner, H.-U., Yi, J. & Sun, G. 2001. The fossil vertebrate faunas of the Toutouhe and Qigu formations of the southern Junggar Basin and their biostratigraphical and paleoecological implications. Pp. 83–94 in Sun, G., Mosbrugger, V., Ashraf, A. R. & Wang, Y. D. (eds) *The Advanced Study of Prehistory Life and Geology of Junggar Basin, Xinjiang, China*. Proceedings of the Sino-German symposium on prehistory life and geology of Junggar Basin, Xinjing, Yrumqi. Vanjing Institute of Geology & Palaeontology: Nanjing.
- Malumíán, N., Nullo, F. E. & Ramos, V. A. 1983. The Cretaceous of Argentina, Chile, Paraguay and Uruguay. Pp. 265–304 in Moullade, M. & Nairn, A. E. M. (eds) *The Phanerozoic Geology of the World II. The Mesozoic*, B. Elsevier: Amsterdam.
- Marsh, O. C. 1877. Notice of new dinosaurian reptiles from the Jurassic formation. *American Journal of Science (Third Series)* 14: 514–516.
- 1878. Principal characters of American Jurassic dinosaurs. Part I. *American Journal of Science (Third Series)* 21: 411–416.
- 1879a. Notice of new Jurassic reptiles. *American Journal of Science (Third Series)* 18: 501–505.
- 1879b. Principal characters of American Jurassic dinosaurs. Part II. *American Journal of Science (Third Series)* 17: 86–92.
- 1889. Notice of new American Dinosauria. *American Journal of Science (Third Series)* 37: 331–336.
- 1890. Description of new dinosaurian reptiles. *American Journal of Science (Third Series)* 39: 81–86.
- McIntosh, J. S. 1990. Sauropoda. Pp. 345–401 in Weishampel, D. B., Dodson, P. & Osmólska, H. (eds) *The Dinosauria*. University of California Press: Berkeley.
- 1997a. The saga of a forgotten sauropod dinosaur. Pp. 7–12 in Wolberg, D. L., Stump, E. & Rosenberg, G. D. (eds), *Dinofest International*. Academy of National Sciences, Philadelphia.
- 1997b. Sauropoda. Pp. 654–658 in Currie, P. J. & Padian, K. (eds) *Encyclopedia of Dinosaurs*. Academic Press: San Diego.
- & Berman, D. S. 1975. Description of the palate and lower jaw of the sauropod dinosaur *Diplodocus* (Reptilia: Saurischia) with remarks on the nature of the skull of *Apatosaurus*. *Journal of Paleontology* 49: 187–199.
- & Carpenter, K. 1998. The holotype of *Diplodocus longus*, with comments on other specimens of the genus. Pp. 85–110 in Carpenter, K., Chure, D. J. & Kirkland, J. I. (eds) *The Upper Jurassic Morrison Formation: An interdisciplinary study*. *Modern Geology* 23. Gordon and Breach Science Publishers: Amsterdam.
- & Williams, M. E. 1988. A new species of sauropod dinosaur, *Haplocanthosaurus delfsi* sp. nov., from the Upper Jurassic, Morrison Fm. of Colorado. *Kirtlandia* 43: 3–26.

- , **Coombs, W. P., Jr. & Russell, D. A.** 1992. A new diplodocid sauropod (Dinosauria) from Wyoming, U.S.A. *Journal of Vertebrate Paleontology* **12**: 158–167.
- , **Miles, C. A., Cloward, K. C. & Parker, J. R.** 1996a. A new nearly complete skeleton of *Camarasaurus*. *Bulletin of the Gunma Museum of Natural History* **1**: 1–87.
- , **Miller, W. E., Stadtman, K. L. & Gillette, D. D.** 1996b. The osteology of *Camarasaurus lewisi* (Jensen, 1988). *Brigham Young University Geology Studies* **41**: 73–115.
- Meyer, C. A. & Monbaron, M.** 2002. Middle Jurassic dinosaur tracks from Morocco – facts and fiction. Pp. 27, in *The 7th European Workshop of Vertebrate Paleontology*. EWVP: Sibiu.
- Miller, W. E., Baer, J. L., Stadtman, K. L. & Britt, B. B.** 1991. The Dry Mesa dinosaur quarry, Mesa County, Colorado. Pp. 31–46 in Averett, W. R. (ed.) *Guidebook for Dinosaur Quarries and Tracksites: Tour, Western Colorado and Eastern Utah*. Museum of Western Colorado: Grand Junction.
- Monbaron, M.** 1983. Dinosauriens du Haut Atlas Central (Maroc): état des recherches et précisions sur la découverte d'un squelette complet de grand cétiosaure. *Actes Société Jurassienne d'Émulation (Porentruy)* **1983**: 203–234.
- , **Russell, D. A. & Taquet, P.** 1999. *Atlasaurus imelakei* n.g., n.sp., a brachiosaurid-like sauropod from the Middle Jurassic of Morocco. *Comptes Rendus de l'Académie des Sciences de Paris, Sciences de la Terre et des Planètes* **329**: 519–526.
- Montanelli, S. B.** 1987. Presencia de Pterosauria (Reptilia) en La Formación La Amarga (Hauteriviiano-Barremiano), Neuquen, Argentina. *Ameghiniana* **24**: 109–113.
- Mook, C. C.** 1917. Criteria for the determination of species in the Saurpoda, with description of a new species of *Apatosaurus*. *Bulletin of the American Museum of Natural History* **37**: 355–360.
- Norell, M. A. & Wheeler, W.** 2003. Missing entry replacement data analysis: a replacement approach to dealing with missing data in paleontological and total evidence data sets. *Journal of Vertebrate Paleontology* **23**: 275–283.
- Olshesky, G.** 1991. A revision of the Parainfraclass Archosauria Cope, 1869, excluding the advanced Crocodylia. *Mesozoic Meanderings* **2**: 1–196.
- Osborn, H. F.** 1912. Crania of *Tyrannosaurus* and *Allosaurus*. *Memoirs of the American Museum of Natural History, New Series* **1**: 1–30.
- & **Mook, C. C.** 1921. *Camarasaurus*, *Amphicoelias*, and other sauropods of Cope. *Memoirs of the American Museum of Natural History, New Series* **3**: 249–386.
- Ouyang, H.** 1989. A new sauropod from Dashanpu, Zigong Co., Sichuan Province (*Abrosaurus dongpoensis* gen. et sp. nov.). *Zigong Dinosaur Museum Newsletter* **2**: 10–14.
- & **Ye, Y.** 2002. *The First Mamenchisaurian Skeleton with Complete Skull: Mamenchisaurus youngi*. Sichuan Science and Technology Press: Chengdu, 111 pp.
- Powell, J. E.** 1992. Osteología de *Saltasaurus loricatus* (Sauropoda – Titanosauridae) del Cretácico Superior del noroeste Argentino. Pp. 165–230 in Sanz, J. L. & Buscalioni, A. D. (eds) *Los Dinosaurios y Su Entorno Biotico*. Actas del Segundo Curso de Paleontología in Cuenca. Instituto 'Juan de Valdes': Cuenca.
- Powell, J. E.** 2003. Revision of South American titanosaurid dinosaurs: palaeobiological, palaeobiogeographical and phylogenetic aspects. *Records of the Queen Victoria Museum*, **111**: 1–173.
- Prámparo, M. B. & Volkheimer, W.** 2002. Nuevos hallazgos de palinomorfofos en la Formación La Amarga, Miembro Bañados de Caichigüé, cuenca Neuquina sudoriental, Argentina. *Ameghiniana* **39**: 395–404.
- Rich, T. H., Vickers-Rich, P., Gimenez, O., Cúneo, R., Puerta, P. & Vacca, R.** 1999. A new sauropod dinosaur from Chubut Province, Argentina. Pp. 61–84 in Tomida, Y., Rich, T. H. & Vickers-Rich, P. (eds) *Proceedings of the Second Gondwana Dinosaur Symposium*. National Science Museum Monographs **15**. National Science Museum of Tokyo: Tokyo.
- Riggs, E. S.** 1903a. *Brachiosaurus altithorax*, the largest known dinosaur. *American Journal of Science (Fourth Series)* **15**: 299–306.
- 1903b. Structure and relationships of opisthocoelian dinosaurs. Part I. *Apatosaurus* Marsh. *Field Columbian Museum Publication* **82**, *Geological Series* **2**: 165–196.
- Russell, D. A.** 1993. The role of central Asia in dinosaurian biogeography. *Canadian Journal of Earth Sciences* **30**: 2002–2012.
- Salgado, L.** 1999. The macroevolution of the Diplodocimorpha (Dinosauria; Sauropoda): a developmental model. *Ameghiniana* **36**: 203–216.
- dos Santos, V. F., Lockley, M. G., Meyer, C. A., Carvalho, J., de Carvalho, A. M. G. & Moratalla, J. J.** 1994. A new sauropod tracksite from the Middle Jurassic of Portugal. Pp. 5–13 in Lockley, M. G., dos Santos, V. F., Meyer, C. A. & Hunt, A. (eds) *Aspects of Sauropod Paleobiology*. *Gaia* **10**. Universidade de Lisboa: Lisbon.
- Sereno, P. C. & Novas, F. E.** 1993. The skull and neck of the basal theropod *Herrerasaurus ischigualastensis*. *Journal of Vertebrate Paleontology* **13**: 451–476.
- Smith, A. G., Smith, D. G. & Funnell, B. M.** 1994. *Atlas of Mesozoic and Cenozoic Coastlines*. Cambridge University Press: Cambridge, 99 pp.
- Southwell, E., Breithaupt, B., Erickson, B. & Flynn, M.** 2003. Jurassic dinosaurs from northeastern Wyoming: Wyoming's quiet corner. *Journal of Vertebrate Paleontology* **23** (suppl. 3): 100A.
- Swofford, D. L.** 2002. *PAUP\**. *Phylogenetic analysis using parsimony (\*and other methods)*. Sinauer Associates: Sunderland.
- Tang, F., Jin, X.-S., Kang, X.-M. & Zhang, G.** 2001. *Omeisaurus maoianus: a complete Sauropoda from Jingyan, Sichuan*. China Ocean Press: Beijing, 128 pp.
- Turner, C. E. & Peterson, F.** 1999. Biostratigraphy of dinosaurs in the Upper Jurassic Morrison Formation of the Western Interior, U.S.A. Pp. 77–114 in Gillette, D. D. (ed.) *Vertebrate Paleontology in Utah*. *Utah Geological Survey Miscellaneous Publication* **99–1**. Utah Geological Survey: Salt Lake City.
- Upchurch, P.** 1995. The evolutionary history of sauropod dinosaurs. *Philosophical Transactions of the Royal Society of London B* **349**: 365–390.
- 1998. The phylogenetic relationships of sauropod dinosaurs. *Zoological Journal of the Linnean Society* **124**: 43–103.
- 1999. The phylogenetic relationships of the Nemetegosauridae (Saurischia, Sauropoda). *Journal of Vertebrate Paleontology* **19**: 106–125.
- & **Martin, J.** 2002. The Rutland *Cetiosaurus*: the anatomy and relationships of a Middle Jurassic British sauropod dinosaur. *Palaeontology* **45**: 1049–1074.
- & **Martin, J.** 2003. The anatomy and taxonomy of *Cetiosaurus* (Saurischia, Sauropoda) from the Middle Jurassic of England. *Journal of Vertebrate Paleontology* **23**: 208–231.
- Upchurch, P., Hunn, C. A. & Norman, D. B.** 2002. An analysis of dinosaurian biogeography: evidence for the existence of vicariance and dispersal patterns caused by geological events. *Proceedings of the Royal Society of London Series B* **269**: 613–621.
- , **Barrett, P. M. & Dodson, P.** 2004. Sauropoda. Pp. 259–322 in Weishampel, D. B., Dodson, P. & Osmólska, H. (eds) *The Dinosauria, Second Edition*. University of California Press: Berkeley.
- Wedel, M. J.** 2003. The evolution of vertebral pneumaticity in sauropod dinosaurs. *Journal of Vertebrate Paleontology* **23**: 344–357.
- , **Cifelli, R. L. & Sanders, R. K.** 2000. Osteology, paleobiology, and relationships of the sauropod dinosaur *Sauroposeidon*. *Acta Palaeontologica Polonica* **45**: 343–388.
- Weishampel, D. B., Barrett, P. M., Coria, R. A., Le Loeuff, J., Xu, X., Zhao, X., Sahni, A., Gomani, E. M. & Noto, C. R.** 2004. Dinosaur distribution. Pp. 517–606 in Weishampel, D. B., Dodson, P. & Osmólska, H. (eds) *The Dinosauria, Second Edition*. University of California Press: Berkeley.
- Whyte, M. A. & Romano, M.** 1994. Probable sauropod footprints from the Middle Jurassic of Yorkshire, England. Pp. 15–26 in Lockley, M. G., dos Santos, V. F., Meyer, C. A. & Hunt, A. (eds) *Aspects of Sauropod Paleobiology*. *Gaia* **10**. Universidade de Lisboa: Lisbon.

- Wiens, J. J.** 2003. Incomplete taxa, incomplete characters, and phylogenetic accuracy: is there a missing data problem? *Journal of Vertebrate Paleontology* **23**: 297–310.
- Wilkinson, M.** 2003. Missing entries and multiple trees: instability, relationships, and support in parsimony analysis. *Journal of Vertebrate Paleontology* **23**: 311–323.
- Wilson, J. A.** 2002. Sauropod dinosaur phylogeny: critique and cladistic analysis. *Zoological Journal of the Linnean Society* **136**: 217–276.
- & **Carrano, M. T.** 1999. Titanosaurs and the origin of ‘wide-gauge’ trackways: a biomechanical and systematic perspective on sauropod locomotion. *Paleobiology* **25**: 252–267.
- & **Sereno, P. C.** 1998. Early evolution and higher-level phylogeny of sauropod dinosaurs. *Society of Vertebrate Paleontology Memoir* **5**: 1–68.
- & **Smith, M. B.** 1996. New remains of *Amphicoelias* Cope (Dinosauria: Sauropoda) from the Upper Jurassic of Montana and diplodocoid phylogeny. *Journal of Vertebrate Paleontology* **16** (suppl. 3): 73A.
- & **Upchurch, P.** 2003. A revision of *Titanosaurus* Lydekker (Dinosauria–Sauropoda), the first dinosaur genus with a ‘Gondwanan’ distribution. *Journal of Systematic Palaeontology* **1**: 125–160.
- Zhang, Y.** 1988. *The Middle Jurassic Dinosaur Fauna from Dashanpu, Zigong, Sichuan Vol. III. Sauropod dinosaur (I). Shunosaurus*. Sichuan Publishing House of Science and Technology: Chengdu, China, 89 pp.
- , **Li, K.** & **Zeng, Q.** 1998. A new species of sauropod from the Late Jurassic of Sichuan Basin (*Mamenchisaurus jingyanensis* sp. nov.). *Journal of Chengdu University of Technology*, **25**: 61–70.
- Zhao, X.-J.** 1993. A new mid-Jurassic sauropod (*Klamelisaurus gobiensis* gen. et sp. nov.) from Xinjiang, China. *Vertebrata Palasiatica*, **31**: 132–138.

Supplementary data is available on Cambridge Journals Online on: [http://www.journals.cup.org/abstract\\_S1477201906001805](http://www.journals.cup.org/abstract_S1477201906001805).