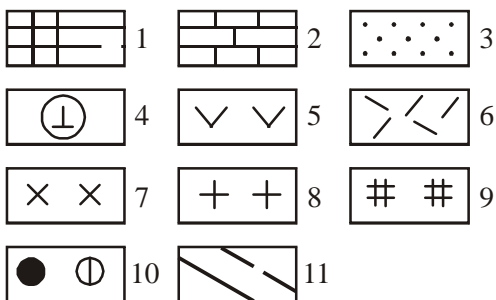
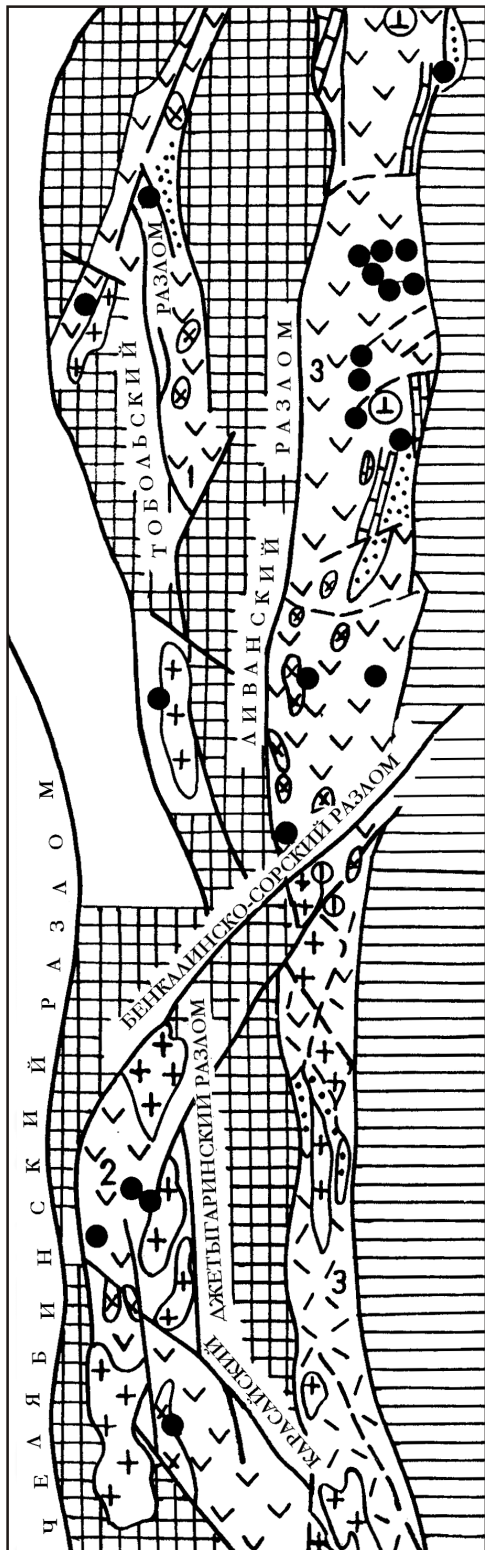




.C  
 0,012,  
 [ , 1987].  
 [1978] a  
 « »(  
 ), 1970, 1987].  
 : 1) :  
 2)  
 :  
 1.  
 2.  
 3.  
 [ , 2001].



1. -

1 - : -

, - ; 2-9 -

, 4 - : 2 - , 3 -

, 5 - , 6 -

8 - , 7 - ,

, 9 - ; 10 -

: - , -

; 11 - : - , -

: 1 - , 2 -

3 -

( . 1). -

( ) ,

(0,5-0,8 %)

(28-35 %).

[ , 1999].

[1985]

1987, 1999].

« ... »

300-500 2000

[1974],

75,56 % [ ..., 1966], 30-45°, 60-80° ( .2).

[ ..., 1983; ..., 1987], 4 ... 0,9

40 ( .3), [ ..., 1987].

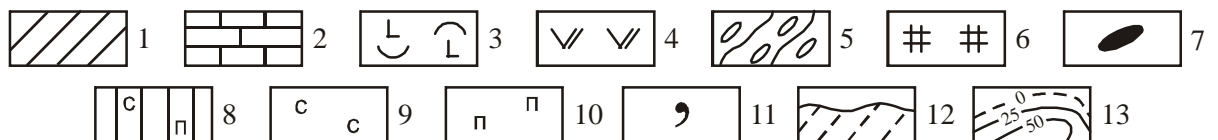
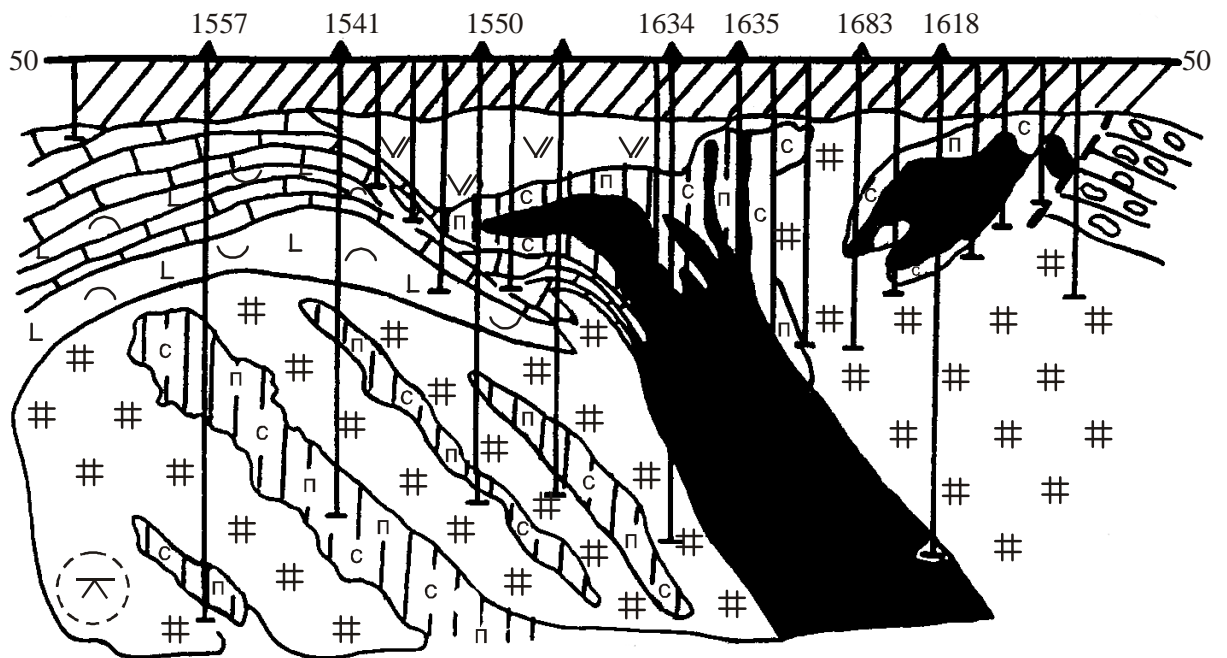
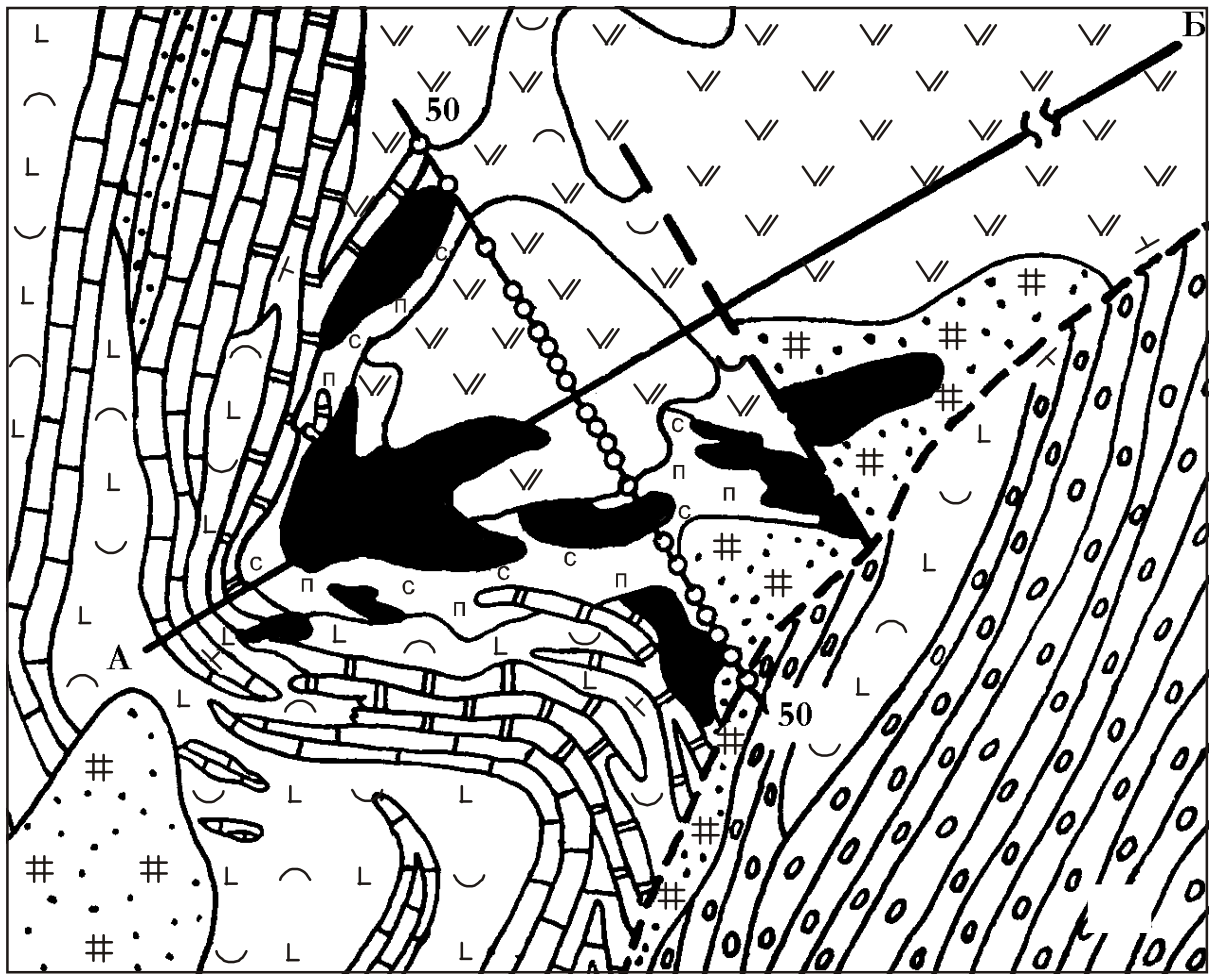
[1966]), (< 3), (> 10)

2400 1300

[ ..., 1987]. 5 [ ..., 2004].

« ... »







, 1973; , 1978, .]. [ ,  
 ,  
 ) ( ,  
 , 1999]. [ ,  
 ,  
 «  
 », ,  
 , MgO 2 % [ ,  
 1987].  
 ,  
 : , ,  
 ,  
 , ( )  
 [ ,  
 , 1975]. ,  
 ,

... ..

6 ( .4).

[ , ,1999].

20 .

( .1, 5).

[ ,1962; ,1970],

150 .

100 .

27 . ,

1200 . .

40 200 .

) (

.4.

( )

( )

1 -

( \_1 soc); 2 -

; 3 -

; 4 -

( \_1 sar); 5 -

; 6 -

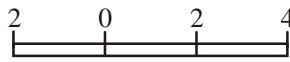
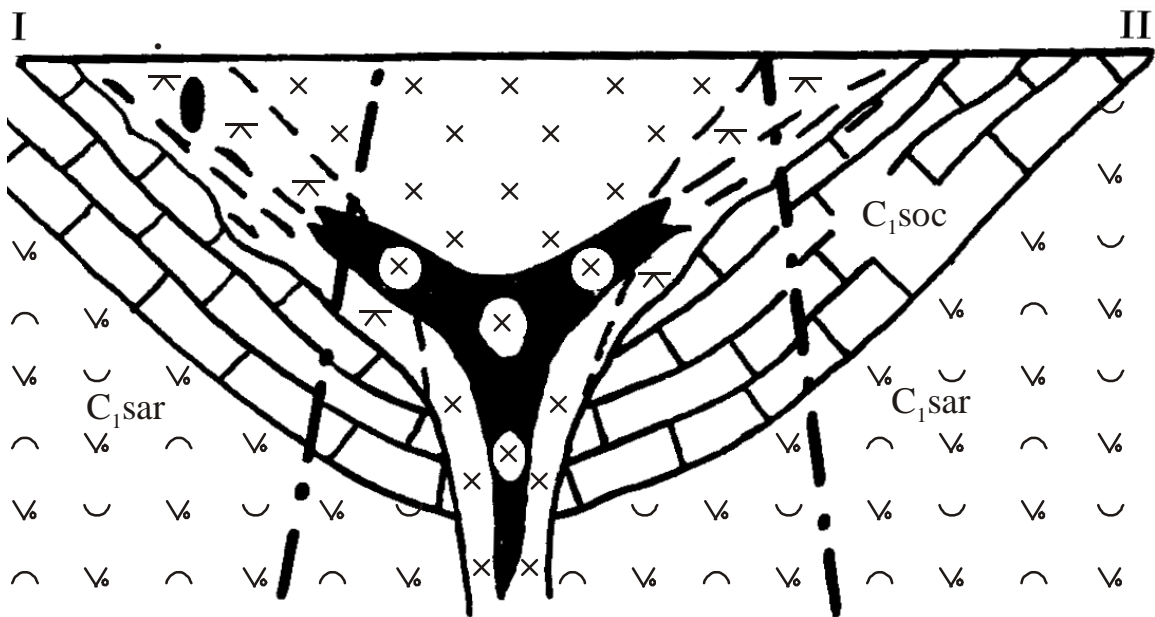
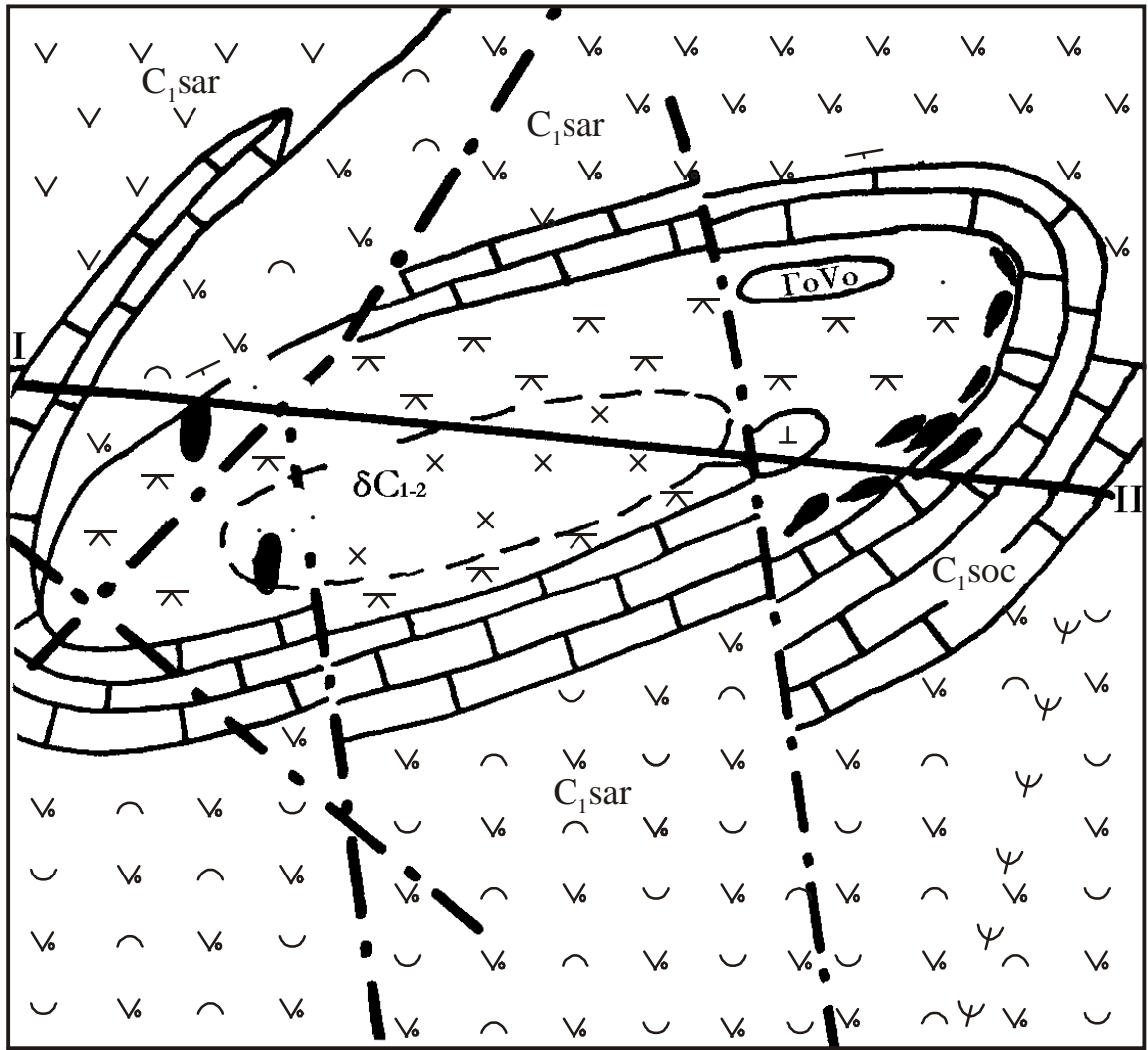
; 7 -

; 8 -

:

, - , ... -

, ... -





.5.

.1.

(.1,5).

(.5).

[1980]

« »

[ , 1970].

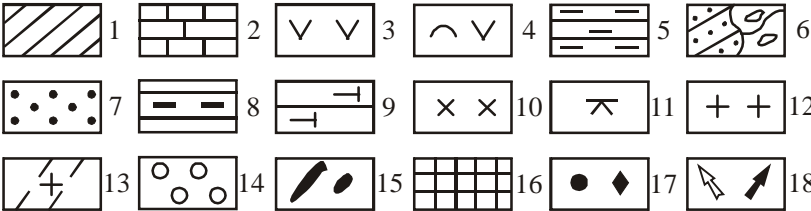
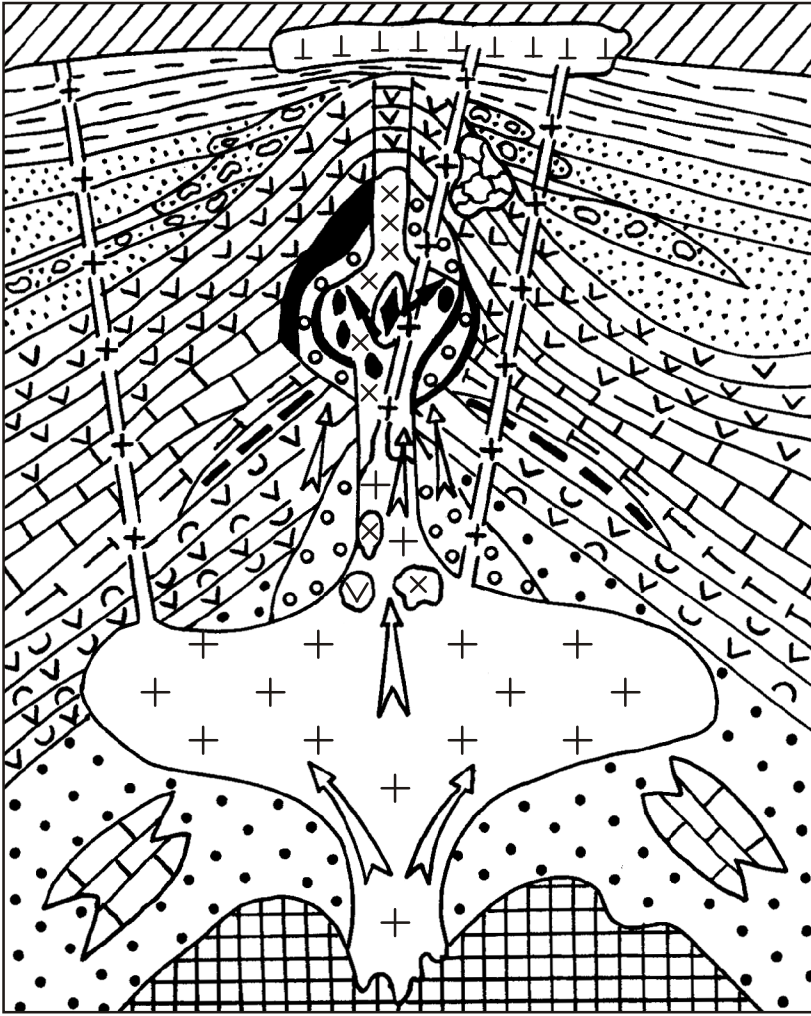
1970],

( ),

[ 356 <sup>2</sup> 30 × 26

, 1987].

[1954],  
[1978],  
[1983]; [1987],  
(. 6).  
[1978, 1983].



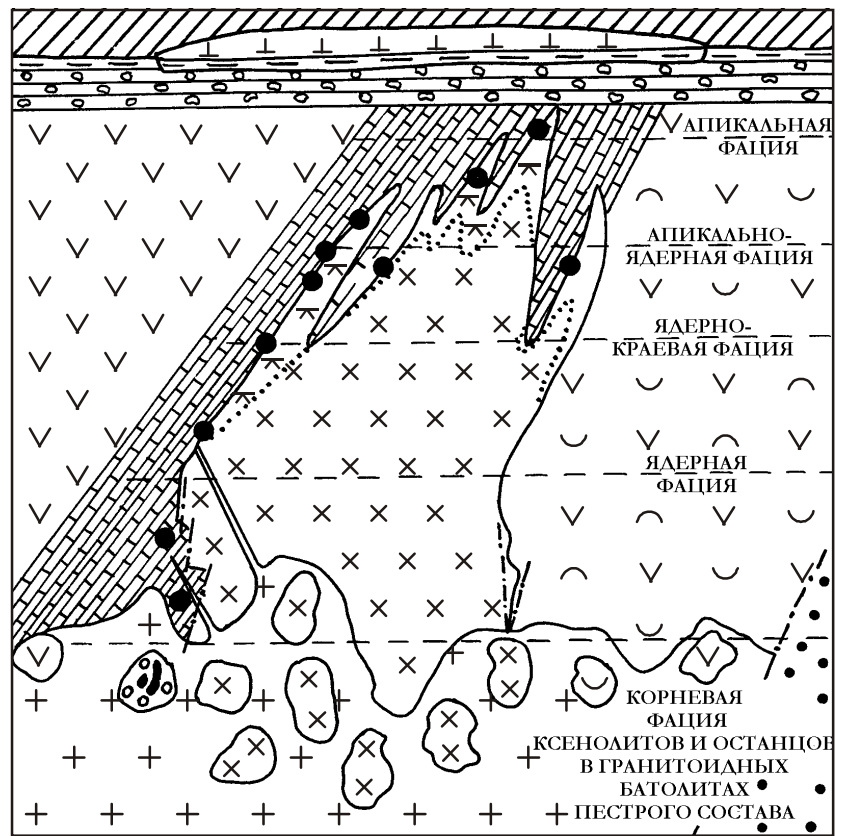
. 6. -  
 -  
 -  
 1 - -  
 ; 2 - ;  
 3 - -  
 ; 4 -  
 ; 5 -  
 ; 6 - ;  
 ; 7 - ;  
 8 - ; 9 -  
 ; 10 - -  
 ; 11 - -  
 ; 12 -  
 ; 13 - -  
 ; 14 - ; 15 -  
 - ; -  
 ; 16 -  
 ; 17 - -  
 ; -  
 - ; 18 -  
 -  
 : - -  
 ; -  
 -

( . 7).

[1958],

10 %

. 7.  
 . 6.  
 20 %  
 III – 25 %.  
 [ ..., 1987, 1988],



37 90 %, [ ..., 1970, 1987]. 200 .  
 2000 [ ..., 1987, 2004]  
 2900-3000  
 [ ..., 1983].  
 6  
 2-1 [ ..., 1987], ..., 1971;  
 ( 2 )  
 ( 2 )  
 19  
 150 2  
 (S).

( 2)

( 3- 1).

(D<sub>3</sub>)  
( ).

« » 1983,

[ , 1987].

[ , 1987].

[ , 1970].

[1978].

(« »)







... , ...

3

3-4 10-15

100 600 [

1987],

250 [ .., 1973]

[ , 1962; , 1987].

8-10

[ , 1969, 1970].

[ , 1987].

,

- ,

-

,

-

,

,

,

,

[ , 1970;  
, 1975].

,

[ , 1970].

«

»

,

,

,

.

-

-

.

,

,

.

-

,



2004 . . .

2004; [ , 2004].

800 2

30

[Ellis, Green, 1979]

40

976°

627°

[Shat- sky et al., 1995] [ , 2004 ].

Finigan MAT Delta E

$\delta^{13}$

[ , 1994; Bekmukhametova, Bekmukhametov, 1995]. - 20,1 %,





. . . , . . .  
 - //  
 , . . . .1971. 5. .2-9.  
 -  
 -  
 , // . 1994.  
 -  
 2. .32-37.  
 -  
 // . , .  
 .2003. 5. .37-55.  
 -  
 4. -  
 -  
 [1953], -  
 // ,2004 . .109-116.  
 -  
 -  
 // -  
 , : ,2004. .199-203.  
 -  
 -  
 // -  
 ,1954. 294 . -  
 // ,2004. .94-99.  
 -  
 // -  
 ,1969. .96-114.  
 -  
 // -  
 . .2. // ,2000. .46-54.  
 -  
 ,1970. 206 . -  
 -  
 . .: ,1987. 212 . 1978. 41 .  
 -  
 -  
 // ,1975. 339 .  
 -  
 .V. // ,1999. .156-163.  
 -  
 : ,1962. 237 .  
 -  
 // .2001. 3-4. .123-137. 1966. 166 .  
 -  
 // ,2004. .108-113. . ,1973. 186 .  
 -  
 // .1999. 4. .49-60. ,1968. .220-302.  
 -  
 // ,1987. 231 .  
 -  
 ,2003. 335 .  
 -  
 .1988. 252 .  
 -

534. // .1963. .X II. .5. .525-  
 .1939. .13. .210-213. // .  
 // -1979. :  
 ,1980. .98-100.  
 // .2. :  
 ,1966. .3-17. // .1972. 3. .123-127.  
 // .1987. 33 .  
 // .1973.  
 11. .34-37.  
 ,1953. .332-452. // .34. .3. .  
 // ,1975. .49-170.  
 // : ,1978. 230 .  
 1985. 183 . // .1955. .22. .18-25.  
 : , *Bekmukhametova Z.A., Bekmukhametov A.E.* Petro-  
 ,1978. 207 . rology of carbon fractionation and geodynamic of it's  
 : , metamorphism during the diamonds formation // Sixth  
 // Intern. Kimberlite Conf. Novosibirsk, 1995. P. 47-49.  
 ,1983. 213 . *Bekmukhametova Z.A., Bekmukhametov A.E.* Car-  
 . bonaceous megafacies of regional metamorphism and  
 : ,1960. 496 . their mineragenetic specialization // 31-st Intern. Geol.  
 // Congr. Rio de Janeiro, Brasilia, 2000. 10-4. P. 254.  
 : ,1958. .100-199. *Ellis D.J., Green D.H.* An experimental study of  
 // the effect of Ca upon garnet-clinopyroxene Fe-Mg ex-  
 . ,1991. 6. .63-74. change equilibria // *Contrib. Mineral. Petrol.* 1979. V. 71.  
 // P. 17-32.  
*Shatsky V.S., Sobolev N.V., Jagouts E. et al.* Ultra-  
 high-pressure metamorphic environment of microdia-  
 monds // Sixth Intern. Kimberlite Conf. Novosibirsk,  
 1995. P. 512-514.